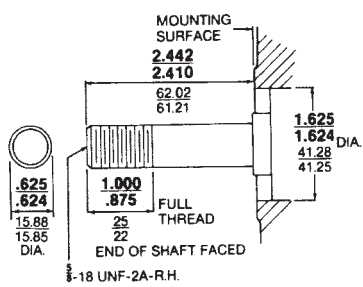
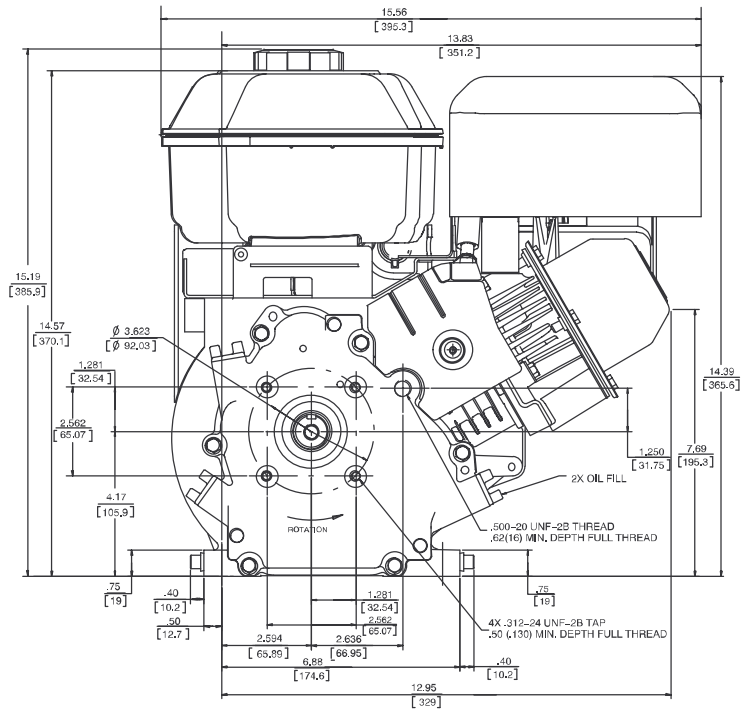
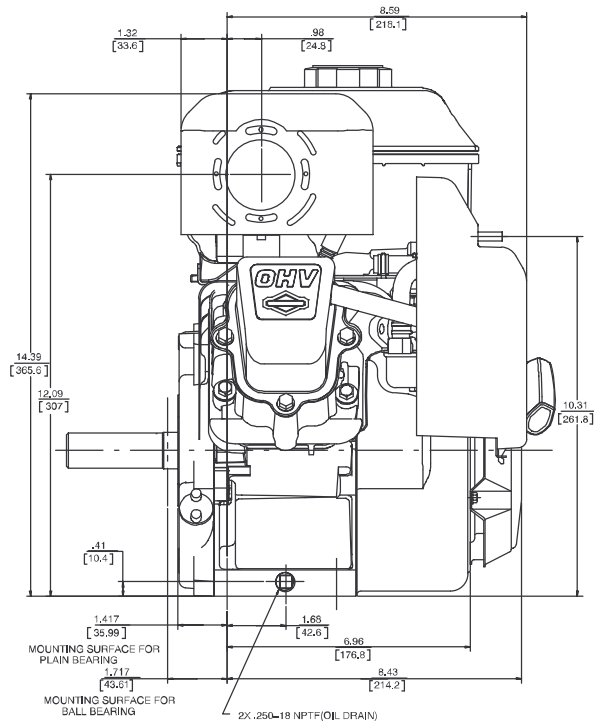
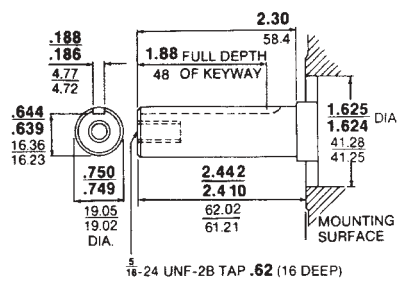


Bore: 2.69 in. (68 mm) Stroke: 2.04 in. (52 mm) Displacement: 11.57 cu. in. (190 cc) Dry Weight: 31.0 lbs. (14.09 kg)

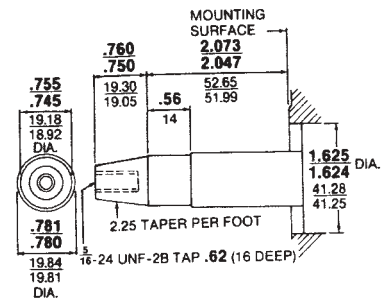
Power Built™ OHV Engines



693122



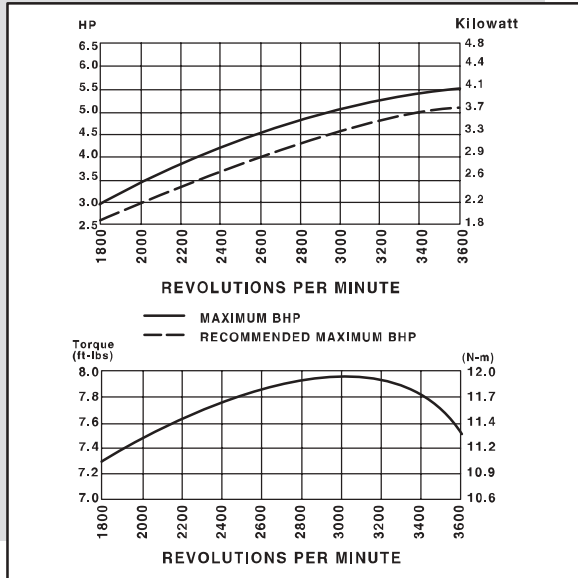
693133  
693127  
693124



693132  
693135  
693126

# 5.5 HP

# 126400 PowerBuilt™ OHV Series



Power Built™ OHV Engines

MODEL	* 5.5 HP 190 CC 126432-0035-E1	* 5.5 HP 190 CC 126432-0036-E1	5.5 HP 190 CC 126432-0064-E1	* 5.5 HP 190 CC 126452-0049-E1	5.5 HP 190 CC 126412-0043-E1	* 5.5 HP 190 CC 126412-0023-E1	5.5 HP 190 CC 126412-0038-E1
CYLINDER	ALUMINUM CYLINDER	ALUMINUM CYLINDER	ALUMINUM CYLINDER	ALUMINUM CYLINDER	ALUMINUM CYLINDER	ALUMINUM CYLINDER	ALUMINUM CYLINDER
FLYWHEEL	HEAVY	HEAVY	HEAVY	HEAVY	HEAVY	HEAVY	HEAVY
STARTER	10:30 REWIND	10:30 REWIND	10:30 REWIND	10:30 REWIND	10:30 REWIND	10:30 REWIND	10:30 REWIND
PTO MOUNTING	FLANGE MOUNT	FLANGE MOUNT	FLANGE MOUNT	FLANGE MOUNT	FLANGE MOUNT	FLANGE MOUNT	FLANGE MOUNT
CRANKSHAFT	693122-5/8" DIA THREADED	693124-3/4" DIA 3/16" KWY D&T 5/16-24	693124-3/4" DIA 3/16" KWY D&T 5/16-24	693125-GEAR REDUCTION	693127-3/4" DIA 3/16" KWY D&T 5/16-24	693127-3/4" DIA 3/16" KWY D&T 5/16-24	693126-TAPER D&T 5/16-24
GEAR REDUCTION				6:1 - 3:00 POSITION			
BEARINGS	PLAIN MAG BALL PTO (SHIM FOR PUMP)	PLAIN MAG BALL PTO	PLAIN MAG BALL PTO (SHIM FOR PUMP)	PLAIN MAG PLAIN PTO	PLAIN MAG PLAIN PTO	PLAIN MAG PLAIN PTO	PLAIN MAG PLAIN PTO
OIL FILL	DUAL	DUAL	DUAL	DUAL	DUAL	DUAL	DUAL
DIPSTICK	WITHOUT	WITHOUT	WITHOUT	WITHOUT	EXTENDED	WITHOUT	WITHOUT
OIL DRAIN	DUAL	DUAL	DUAL	DUAL	DUAL	DUAL	DUAL
LUBRICATION SYSTEM	SPLASH	SPLASH	SPLASH	SPLASH	SPLASH	SPLASH	SPLASH
FUEL SYSTEM	3.00 QUARTS (2.85 L) MOLDED TANK	3.00 QUARTS (2.85 L) MOLDED TANK	3.00 QUARTS (2.85 L) MOLDED TANK	3.00 QUARTS (2.85 L) MOLDED TANK	3.00 QUARTS (2.85 L) MOLDED TANK	3.00 QUARTS (2.85 L) MOLDED TANK	3.00 QUARTS (2.85 L) MOLDED TANK
GOVERNOR	MECHANICAL	MECHANICAL	MECHANICAL	MECHANICAL	MECHANICAL	MECHANICAL	MECHANICAL
CONTROLS	MANUAL FRICTION EQUIP FOR REMOTE	MANUAL FRICTION EQUIP FOR REMOTE	MANUAL FRICTION EQUIP FOR REMOTE	MANUAL FRICTION EQUIP FOR REMOTE	EQUIP FOR REMOTE	MANUAL FRICTION EQUIP FOR REMOTE	FIXED SPEED
CHOKE	MANUAL CHOKE	MANUAL CHOKE	MANUAL CHOKE	MANUAL CHOKE	MANUAL CHOKE	MANUAL CHOKE	MANUAL CHOKE
NO-LOAD TEST SPEED	4000 ± 100 RPM	3600 ± 100 RPM	3600 ± 100 RPM	3600 ± 100 RPM	3600 ± 100 RPM	3800 ± 100 RPM	3750 ± 100 RPM
CASING CLAMP & SCREW	LOOSE	LOOSE	LOOSE	LOOSE	LOOSE	LOOSE	WITHOUT
STOPS	REMOTE STOP SWITCH	REMOTE STOP SWITCH	REMOTE STOP SWITCH	REMOTE STOP SWITCH	ROCKER STOP SWITCH	REMOTE STOP SWITCH	ROCKER STOP SWITCH
AIR CLEANER	INSTALLED PAPER ELEM.	INSTALLED PAPER ELEM.	INSTALLED PAPER ELEM.	INSTALLED PAPER ELEM.	INSTALLED PAPER ELEM.	INSTALLED PAPER ELEM.	INSTALLED PAPER ELEM.
MUFFLER	LO-TONE INSTALLED UNPAINTED LO-TONE GUARD INSTALLED	LO-TONE INSTALLED UNPAINTED	LO-TONE INSTALLED UNPAINTED LO-TONE GUARD INSTALLED	LO-TONE INSTALLED UNPAINTED	LO-TONE INSTALLED UNPAINTED LO-TONE GUARD INSTALLED	LO-TONE INSTALLED UNPAINTED	LO-TONE INSTALLED UNPAINTED
DEFLECTOR	WITHOUT	WITHOUT	WITHOUT	WITHOUT	WITHOUT	WITHOUT	WITHOUT
PAINT	290-SATIN BLACK	290-SATIN BLACK	290 SATIN BLACK	290 SATIN BLACK	290 SATIN BLACK	290 SATIN BLACK	290 SATIN BLACK
MINIMUM ORDER QTY	24	24	24	24	24	24	24
PACKAGING	001/016/040	001/032/040	032/040	001	001/016/040	001/016/032/040	001/032

\* Indicates that engine specification is included in the *Engine Sales Replacement Specifications*, MS-5568.