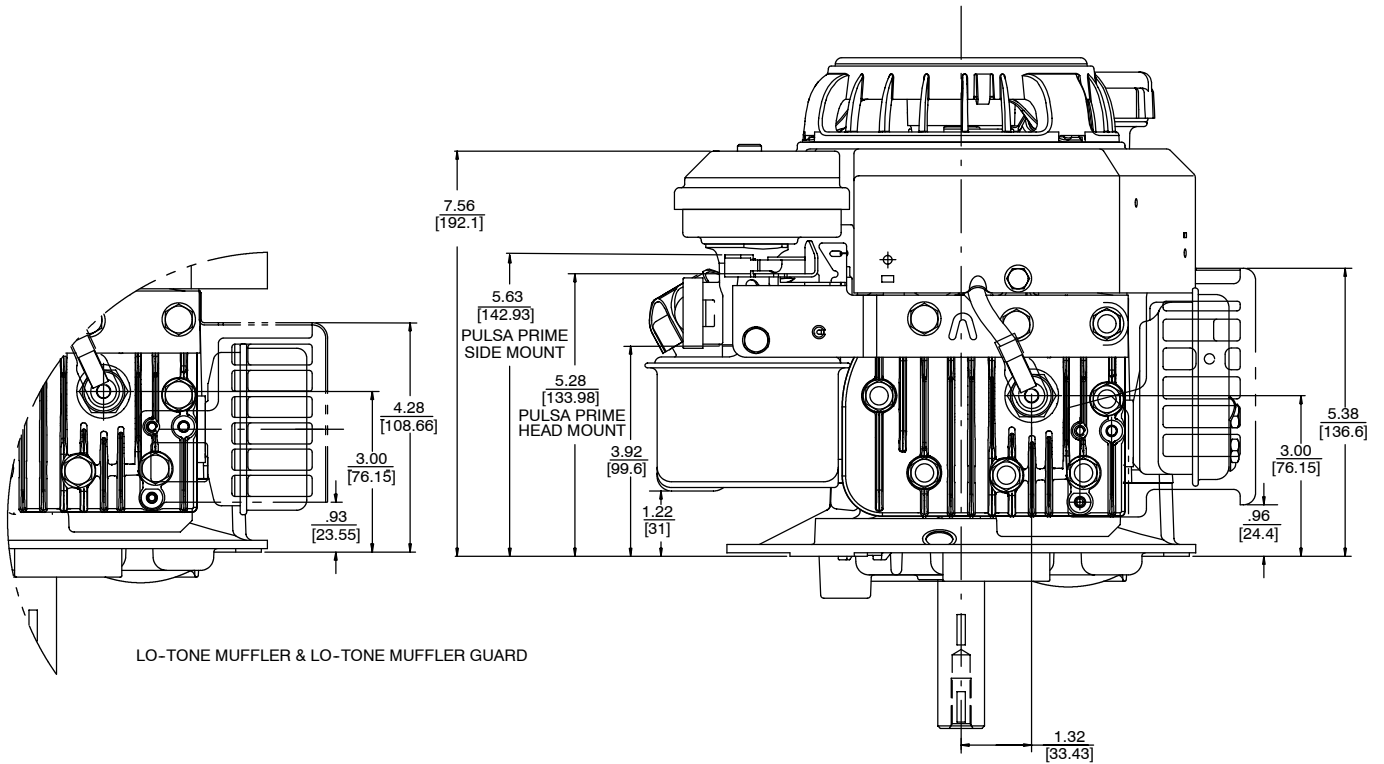




# Sprint™ 375/40

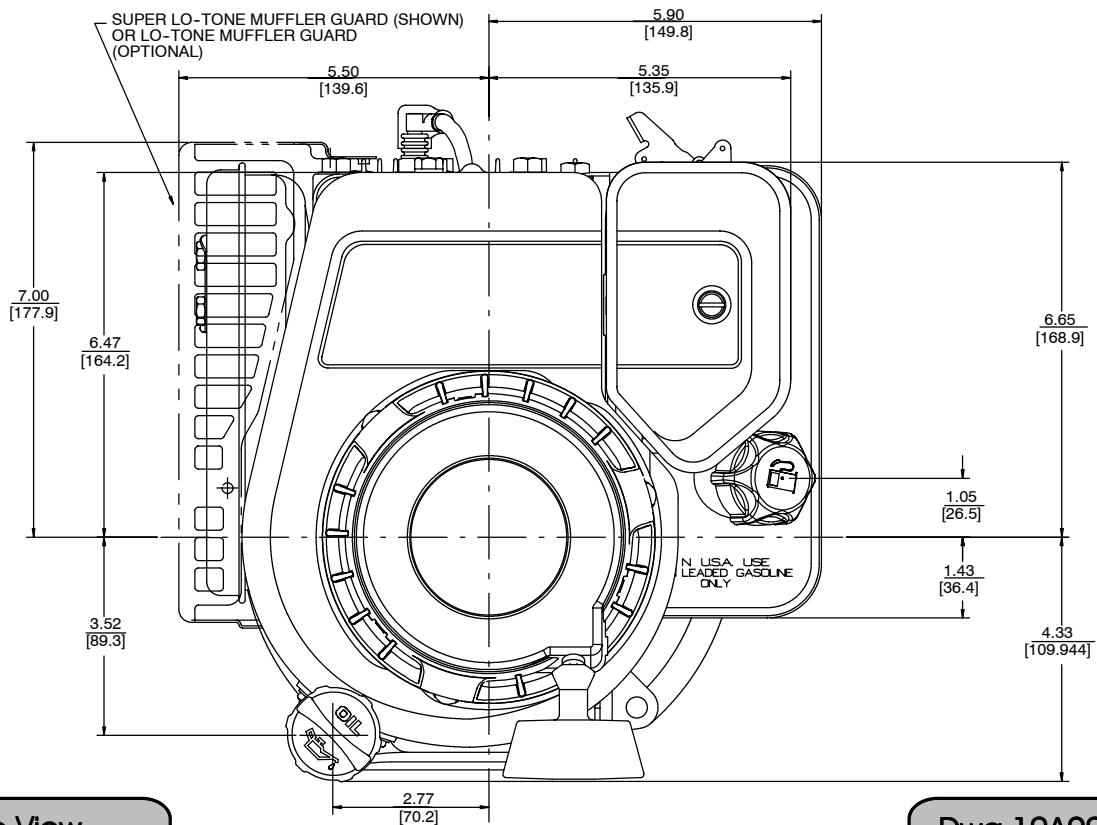
SPRINT 375 98900  
SPRINT 40 10D900

## Outline Drawings



Front View

Dwg 10A90000006



Top View

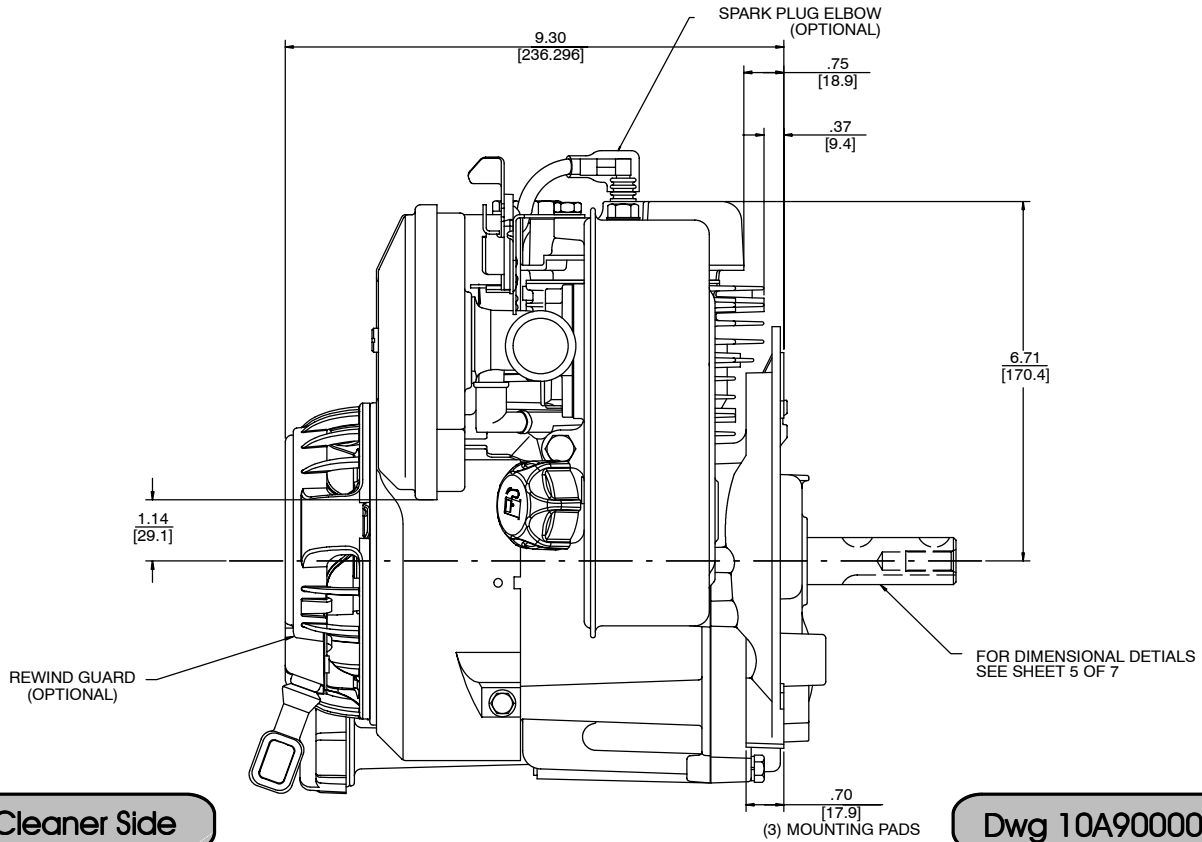
Dwg 10A90000006



# Sprint™ 375/40

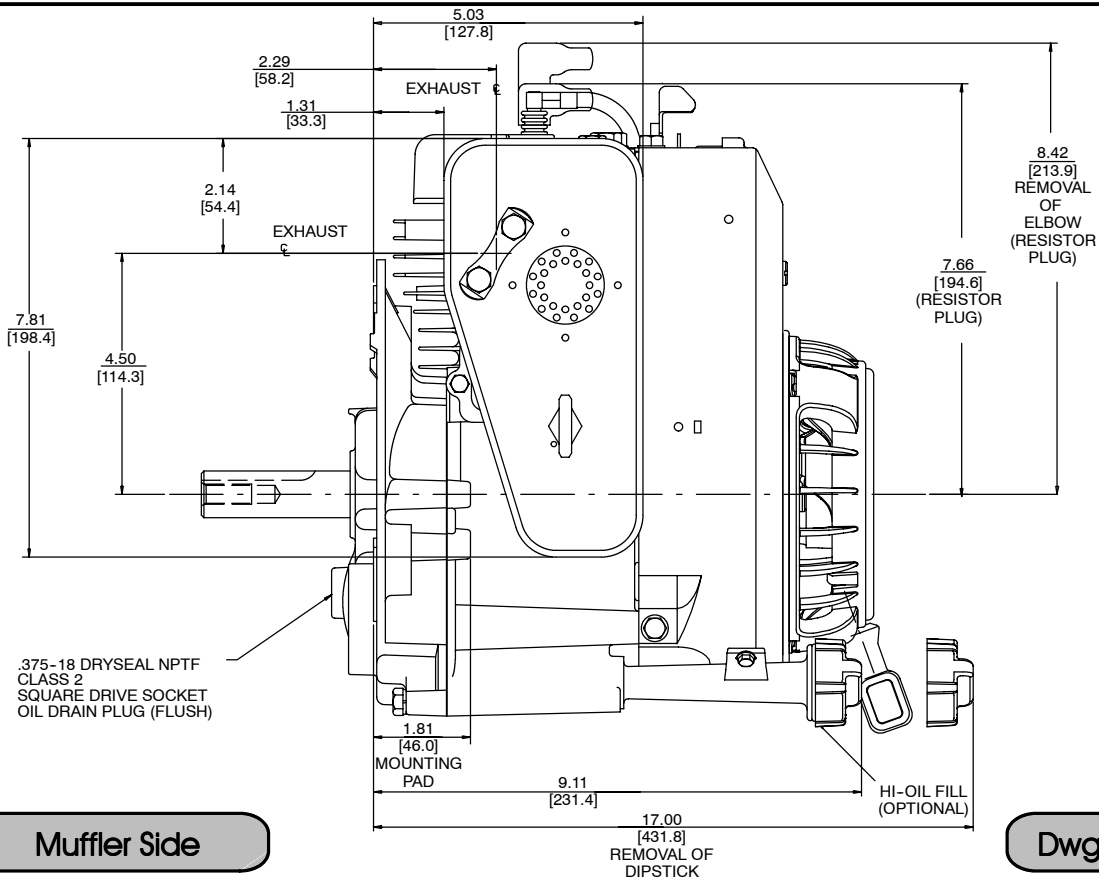
SPRINT 375 98900  
SPRINT 40 10D900

## Outline Drawings



Air Cleaner Side

Dwg 10A90000006



Muffler Side

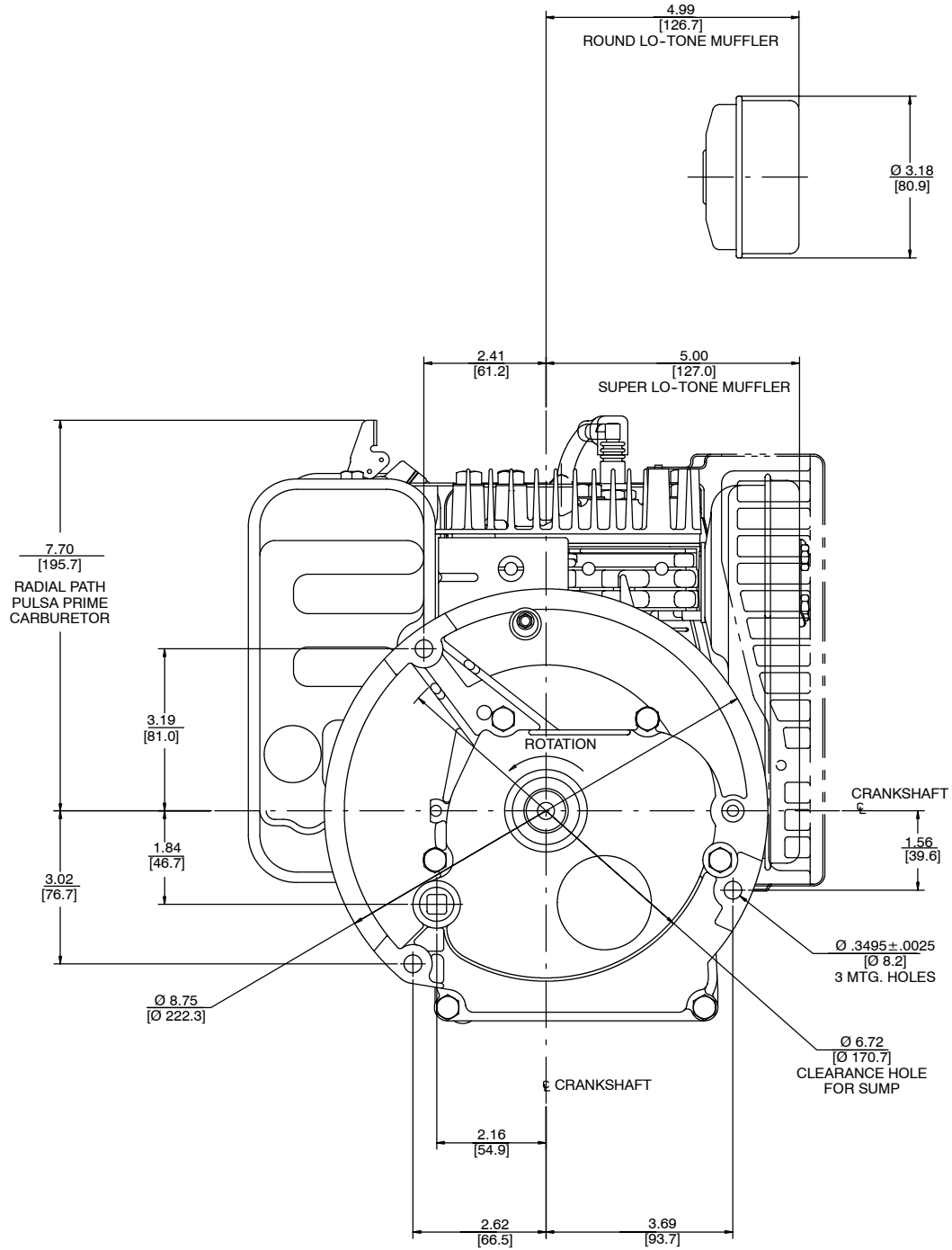
Dwg 10A90000006



# Sprint™ 375/40/ Quattro™ 40

SPRINT 38 98900  
SPRINT 40 10D900  
QUATTRO 40 10A900

## Outline Drawing



Engine Base

Dwg 10A90000006

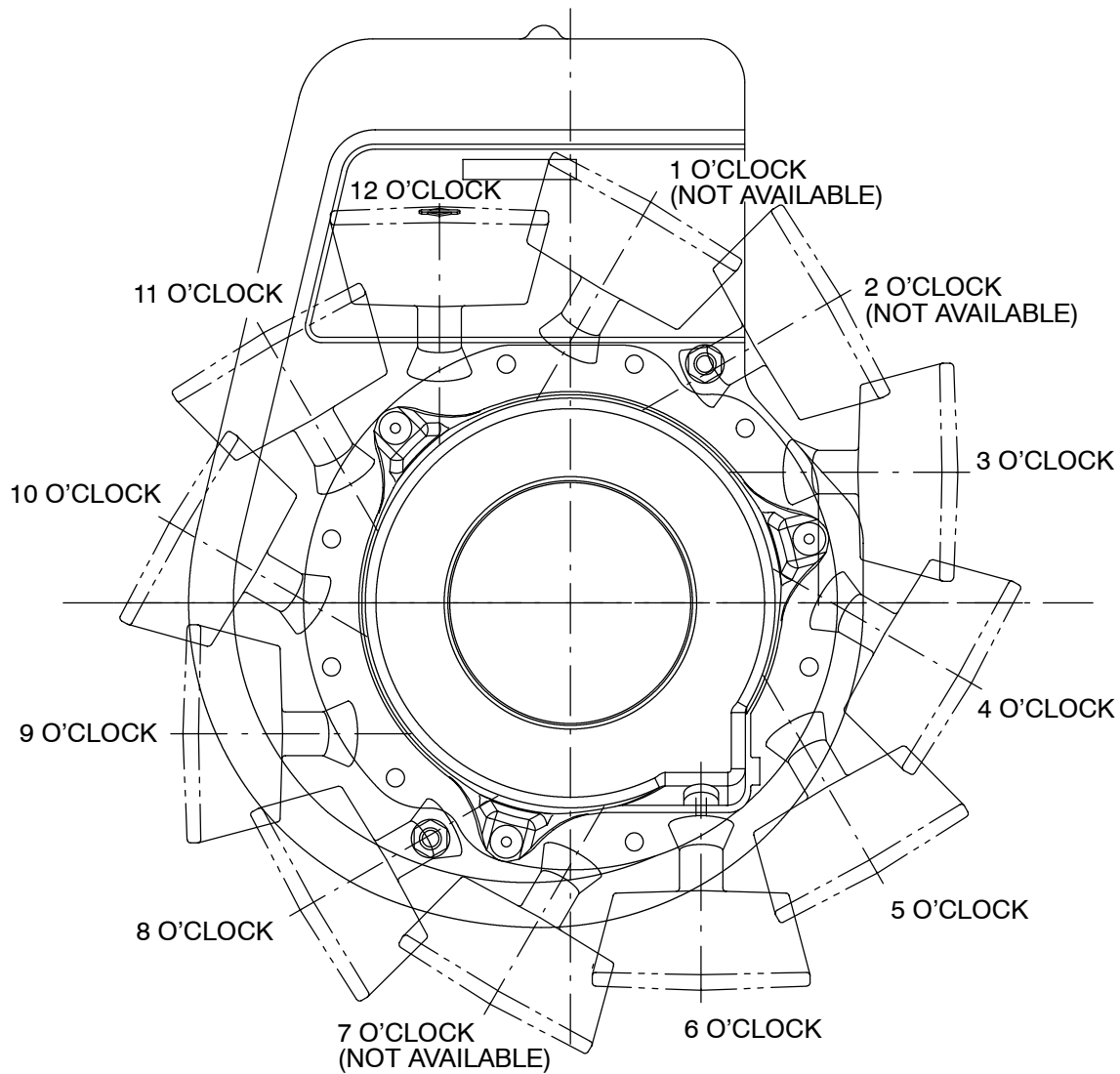


**Sprint™ 375/40/ Quattro 40**

SPRINT 375 98900  
SPRINT 40 10D900  
QUATTRO 40 10A900

**Rewind Starter Positions**

**MODEL 10 SERIES  
REWIND STARTER POSITIONS**



\* 10A9 "QUATTRO" REQUIRES 5:00 OR 6:00 REWIND POSITION

Rewind Starter Positions

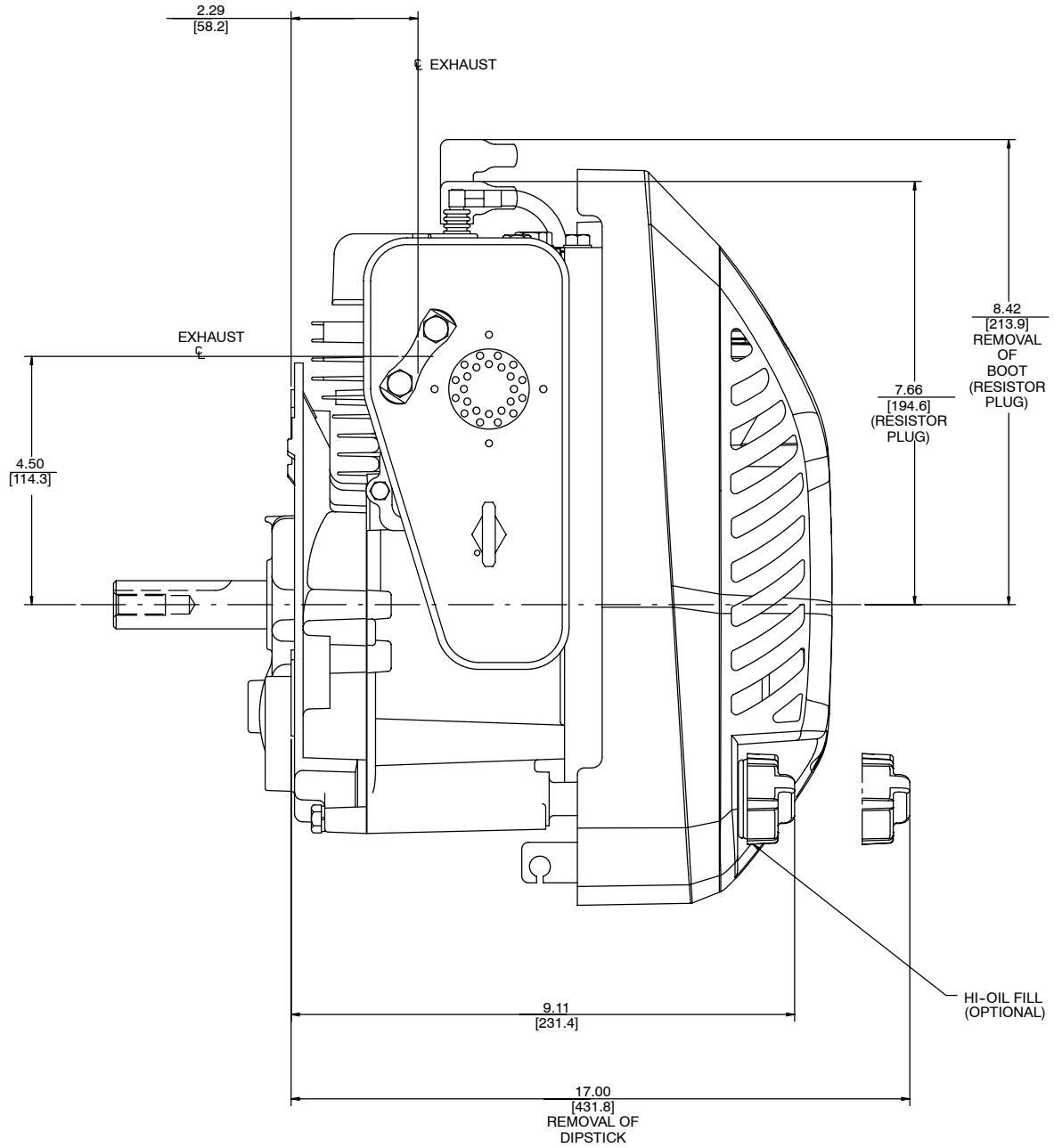
Dwg 10A90000006



# Quattro 40

QUATTRO 40 10A900

## Outline Drawing



Muffler Side

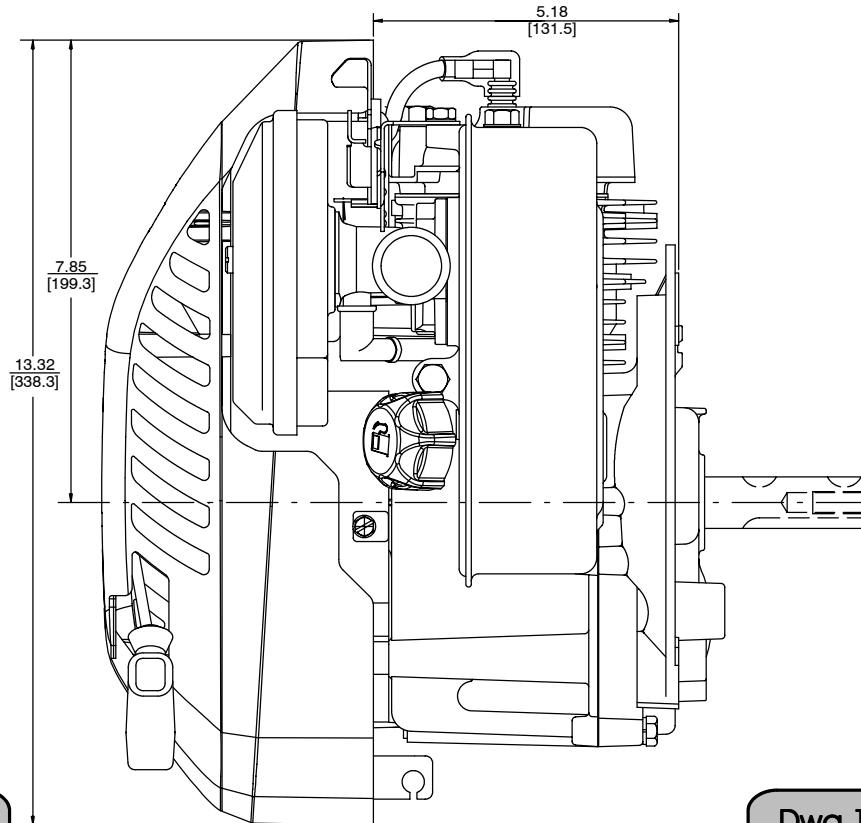
Dwg 10A90000006



# Quattro 40

QUATTRO 40 10A900

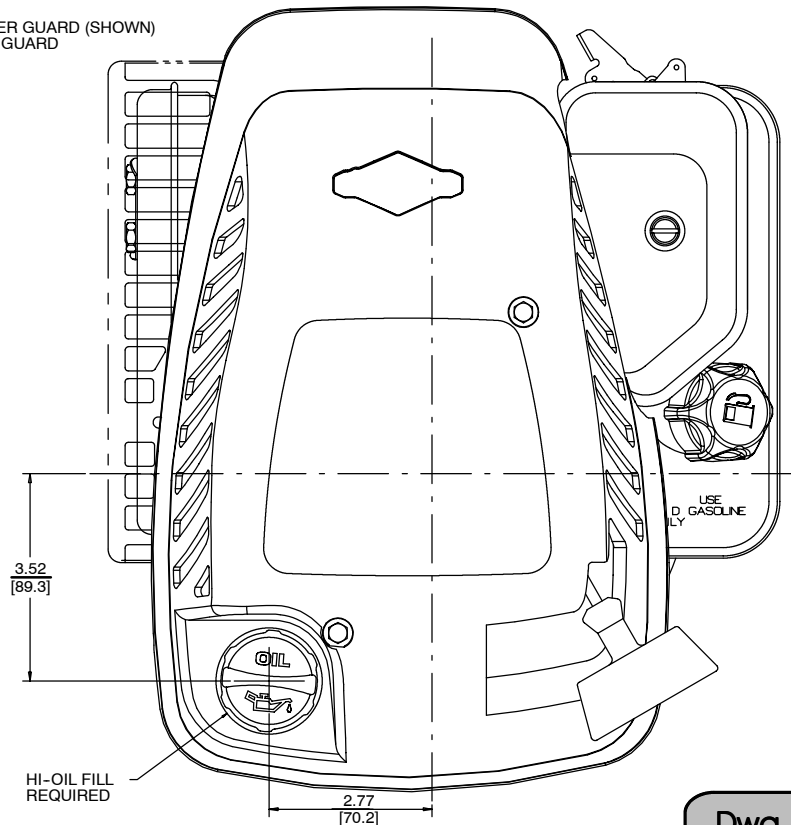
## Outline Drawings



Air Cleaner Side

Dwg 10A90000006

SUPER LO-TONE MUFFLER GUARD (SHOWN)  
AND LO-TONE MUFFLER GUARD  
(OPTIONAL)



Top View

Dwg 10A90000006

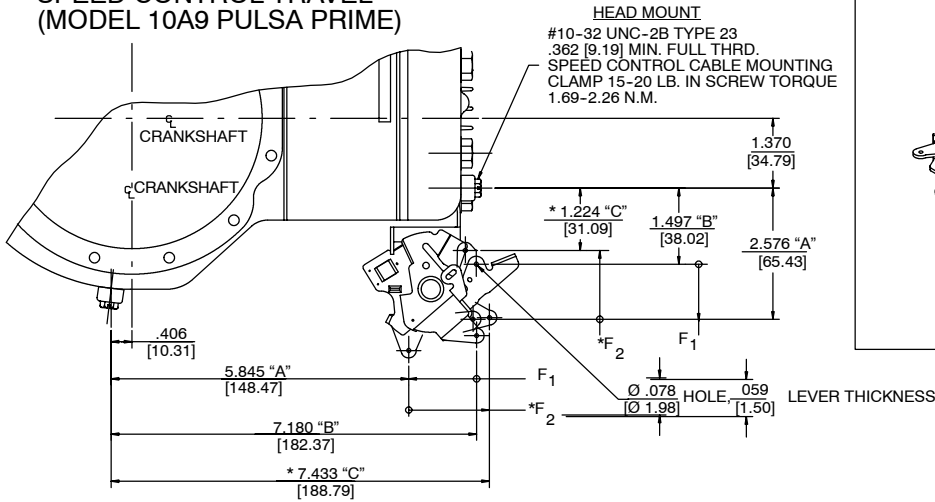


# Sprint™ 375/40/ Quattro™ 40

SPRINT 375 98900  
SPRINT 40 10D900  
QUATTRO 40 10A900

## Controls

### SPEED CONTROL TRAVEL (MODEL 10A9 PULSA PRIME)



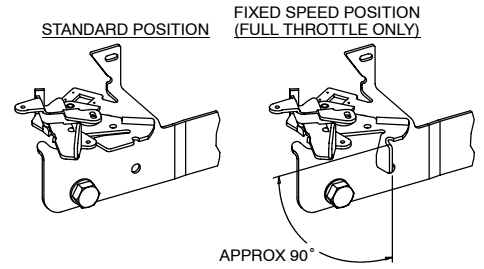
#### SIDE MOUNT

FORCE	DESCRIPTION
MANUAL	
F <sub>1</sub> = 6.0 LBS. MAX. (SIDE MOUNT)	IDLE TO TOP SPEED
= 26.69 N	
3.0 LBS. MAX. (HEAD MOUNT)	
13.34 N	
REMOTE	
F <sub>2</sub> = 6.2 LBS. MAX. (SIDE MOUNT)	TOP SPEED FULL STOP
= 27.58 N	
4.5 LBS. MAX. (HEAD MOUNT)	
20.02 N	

POSITION	DESCRIPTION
"A"	TOP SPEED
"B"	IDLE
* "C"	FULL STOP
FULL TRAVEL:	COMPLIANCE (A-B) NON-COMPLIANCE (A-C)

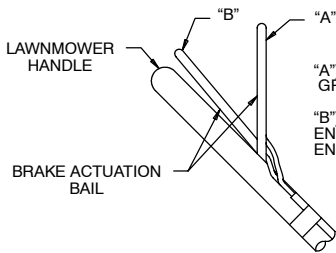
\* FOR NON-COMPLIANCE ENGINES ONLY

### FIXED SPEED CONTROL (MODEL 10A9 PULSA PRIME)



## Speed Control Travel

Dwg 10A90000006



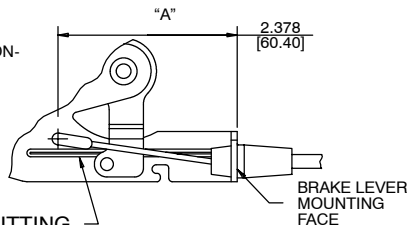
### BAIL POSITION

"A") BAIL OPEN - BRAKE IS ACTIVATED, IGNITION IS GROUNDED AND THE ENGINE WILL NOT START.  
"B") BAIL CLOSED - BRAKE IS RELEASED AND THE ENGINE IGNITION GROUND IS INTERRUPTED; THE ENGINE IS CAPABLE OF STARTING.

### BRAKE CONTROL TRAVEL

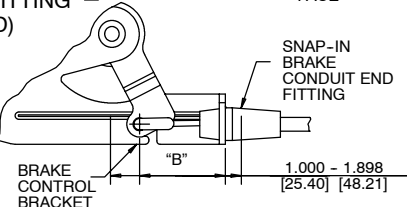
#### BRAKE ACTIVATED (BAIL OPEN)

CABLE FREE LENGTH: ASSEMBLE BAIL CONTROLS AS IN PRODUCTION. INSTALL THE SNAP-IN BRAKE CABLE END FITTING INTO BRAKE CONTROL BRACKET; DO NOT INSTALL INNER WIRE "Z" HOOK INTO CONTROL LEVER HOLE. WITH BAIL UP (POSITION "A") MEASURE THE DISTANCE FROM THE SNAP-IN MOUNTING FACE TO THE CENTER OF "Z" HOOK. THIS FREE LENGTH MUST BE 2.378" MINIMUM.



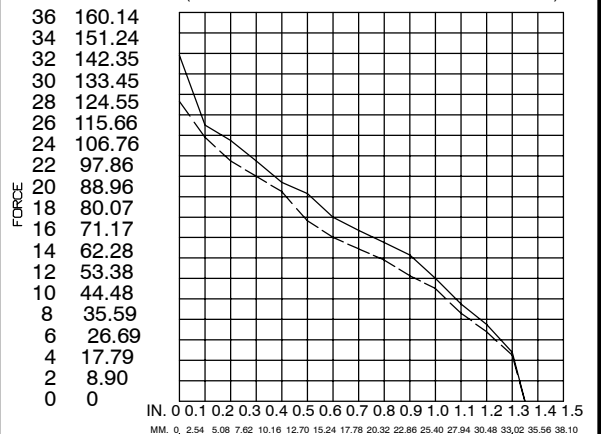
#### BRAKE RELEASED (BAIL CLOSED)

BRAKE LEVER TRAVEL: INSTALL "Z" HOOK INTO BRAKE CONTROL LEVER HOLE AND INSTALL THE SNAP-IN BRAKE CABLE END FITTING INTO BRAKE CONTROL BRACKET. ACTUATE BAIL TO CLOSED POSITION (POSITION "B"). MEASURE THE DISTANCE FROM THE SNAP-IN MOUNTING FACE TO THE CENTER OF THE "Z" HOOK. THIS BRAKE RELEASED CABLE LENGTH MUST MEASURE 1.000"-1.898."



LBS NEWTONS

### BRAKE LEVER FORCE (AT BRAKE ASSEMBLY Z-FITTING MOUNT HOLE)



"B" BRAKE RELEASED W/ MAXIMUM OVERTRAVEL  
"A" - BRAKE ON

— ACTUATION FORCE — RETURN ACTUATION FORCE

## Brake Control Travel

## Brake Lever Force



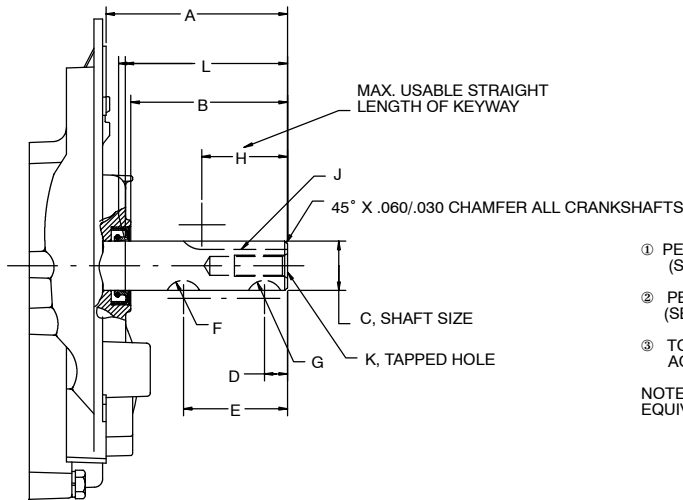
# Sprint™ 375/40/ Quattro™ 40

**SPRINT 375 98900**  
**SPRINT 40 10D900**  
**QUATTRO 40 10A900**

## Crankshaft Data

MODEL 9 SERIES CRANKSHAFT EXTENSION DIMENSION CHART

BRIGGS & STRATTON EXTENSION NO.	CRANK-SHAFT PART NO.	A +.033 -.051 ③	B +.043 -.061 ③	C	D ±.020	E ±.020	F ① WOODRUFF KEY NO. (NOM. SIZE)	G ① WOODRUFF KEY NO. (NOM. SIZE)	H ±.020	J ② SQUARE KEY SIZE (W X H)	K TAPPED HOLE SIZE	L ±.045	PRODUCTION ASSEMBLY NUMBER
C161	499016	3.156 [80.163]	2.727 [69.266]	Ø .874 .873	.406 [10.312]	1.844 [46.838]	# 505 (.156 X .625) [3.962 X 15.875]	# 505 (.156 X .625) [3.962 X 15.875]	1.520 [38.608]	.188 X .188 [4.775 X 4.775]	.375-24 UNF-2B [9.525] .94 DEEP MIN. [23.876]	2.783 [70.688]	499016
C251	499014	2.438 [61.925]	2.009 [51.029]	Ø .874 .873	.406 [10.312]	1.188 [30.175]	# 505 (.156 X .625) [3.962 X 15.875]	# 505 (.156 X .625) [3.962 X 15.875]	1.520 [38.608]	.188 X .188 [4.775 X 4.775]	.375-24 UNF-2B [9.525] .94 DEEP MIN. [23.876]	2.065 [52.451]	499014
C31	499015	1.188 [30.175]	.750 [19.050]	Ø .874 .873	.406 [10.312]	-	-	# 505 (.156 X .625) [3.962 X 15.875]	-	-	.375-24 UNF-2B [9.525] .94 DEEP MIN. [23.876]	.815 [20.701]	499015
C41	499017	1.812 [46.025]	1.383 [35.128]	Ø .874 .873	.406 [10.312]	-	-	# 505 (.156 X .625) [3.962 X 15.875]	1.020 [25.908]	.188 X .188 [4.775 X 4.775]	.375-24 UNF-2B [9.525] .94 DEEP MIN. [23.876]	1.439 [36.551]	499017



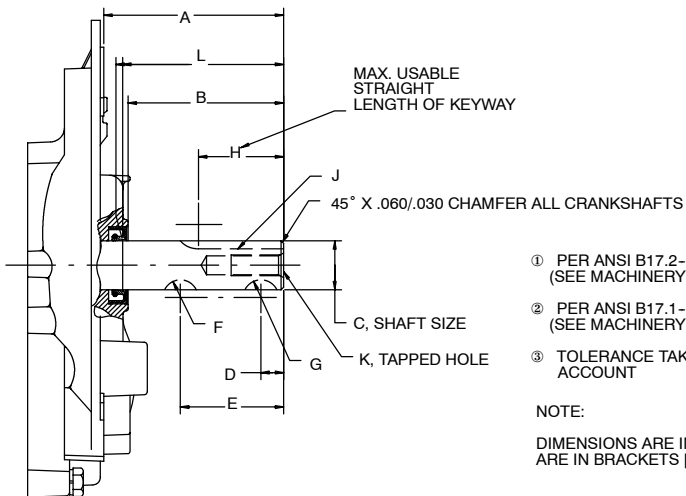
- ① PER ANSI B17.2-1965, R 1978  
(SEE MACHINERY'S HANDBOOK, INDUSTRIAL PRESS)
- ② PER ANSI B17.1-1967, R 1973  
(SEE MACHINERY'S HANDBOOK, INDUSTRIAL PRESS)
- ③ TOLERANCE TAKING MAXIMUM END PLAY INTO ACCOUNT

NOTE: DIMENSIONS ARE IN INCHES. MILLIMETER EQUIVALENTS ARE IN BRACKETS [ ].

**Dwg 98902010101**

MODEL 10 SERIES CRANKSHAFT EXTENSION DIMENSION CHART

BRIGGS & STRATTON EXTENSION NO.	CRANK-SHAFT PART NO.	A +.033 -.051 ③	B +.043 -.061 ③	C	D ±.020	E ±.020	F ① WOODRUFF KEY NO. (NOM. SIZE)	G ① WOODRUFF KEY NO. (NOM. SIZE)	H ±.020	J ② SQUARE KEY SIZE (W X H)	K TAPPED HOLE SIZE	L ±.045	PRODUCTION ASSEMBLY NUMBER
C161	499000	3.156 [80.163]	2.727 [69.266]	Ø .874 .873	.406 [10.312]	1.844 [46.838]	# 505 (.156 X .625) [3.962 X 15.875]	# 505 (.156 X .625) [3.962 X 15.875]	1.520 [38.608]	.188 X .188 [4.775 X 4.775]	.375-24 UNF-2B [9.525] .94 DEEP MIN. [23.876]	2.783 [70.688]	499000
C251	498998	2.438 [61.925]	2.009 [51.029]	Ø .874 .873	.406 [10.312]	1.188 [30.175]	# 505 (.156 X .625) [3.962 X 15.875]	# 505 (.156 X .625) [3.962 X 15.875]	1.520 [38.608]	.188 X .188 [4.775 X 4.775]	.375-24 UNF-2B [9.525] .94 DEEP MIN. [23.876]	2.065 [52.451]	498998
C31	498999	1.188 [30.175]	.750 [19.050]	Ø .874 .873	.406 [10.312]	-	-	# 505 (.156 X .625) [3.962 X 15.875]	-	-	.375-24 UNF-2B [9.525] .94 DEEP MIN. [23.876]	.815 [20.701]	498999
C41	499001	1.812 [46.025]	1.383 [35.128]	Ø .874 .873	.406 [10.312]	-	-	# 505 (.156 X .625) [3.962 X 15.875]	1.020 [25.908]	.188 X .188 [4.775 X 4.775]	.375-24 UNF-2B [9.525] .94 DEEP MIN. [23.876]	1.439 [36.551]	499001



- ① PER ANSI B17.2-1965, R 1978  
(SEE MACHINERY'S HANDBOOK, INDUSTRIAL PRESS)
- ② PER ANSI B17.1-1967, R 1973  
(SEE MACHINERY'S HANDBOOK, INDUSTRIAL PRESS)
- ③ TOLERANCE TAKING MAXIMUM END PLAY INTO ACCOUNT

NOTE:  
 DIMENSIONS ARE IN INCHES. MILLIMETER EQUIVALENTS ARE IN BRACKETS [ ].

**Dwg 10A90000006**

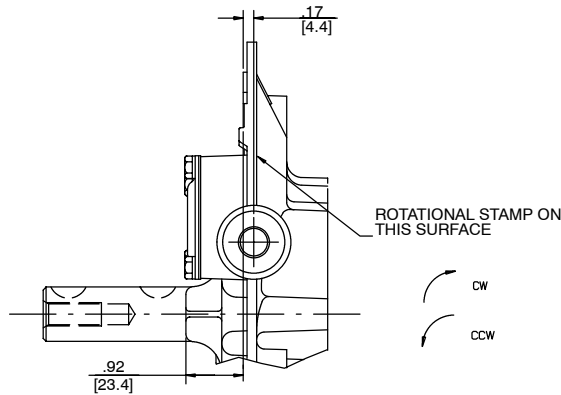
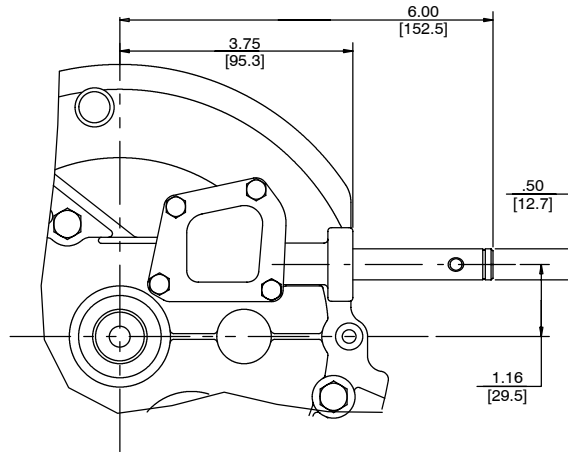




# Sprint™ 40/ Quattro™ 40

SPRINT 40 10D902  
QUATTRO 40 10A902

## Crankshaft Data



Auxiliary Drive (When Required)

Dwg 10A90000006



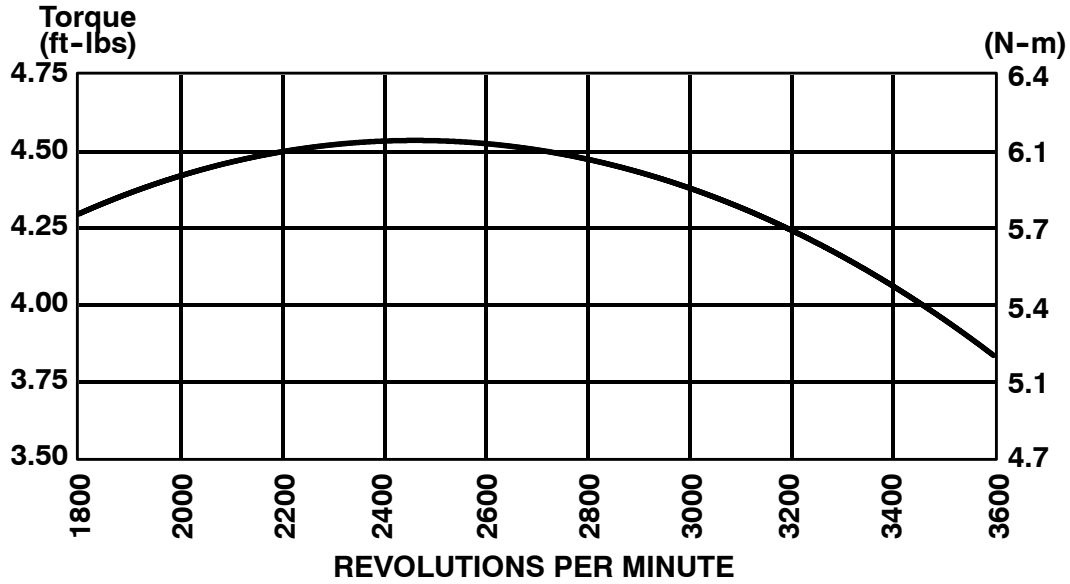
# Sprint™ 375/40/ Quattro 40

SPRINT 375 98900  
SPRINT 40 10D900  
QUATTRO 40 10A900

## Performance Data

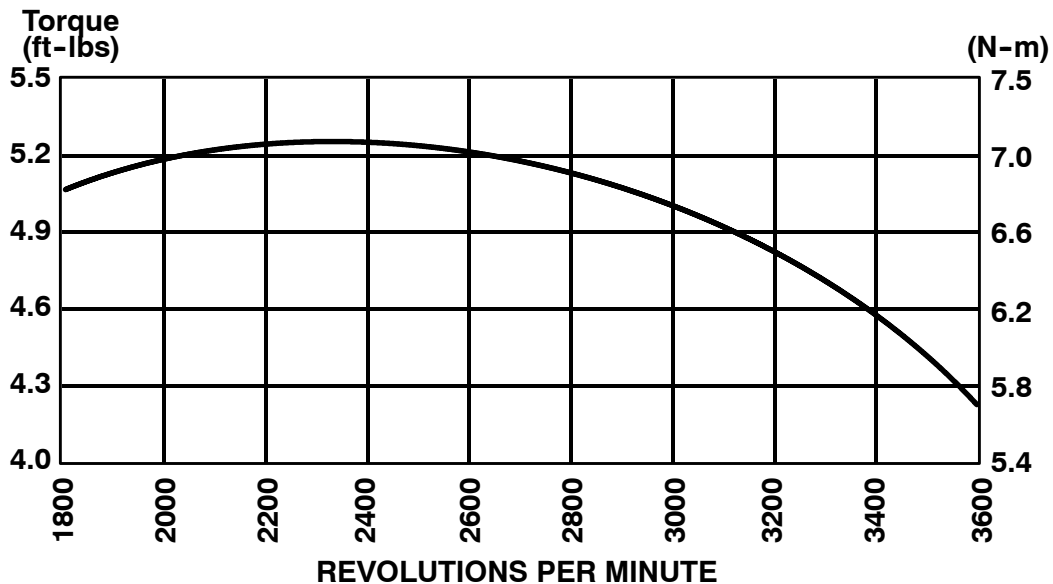
Torque Curve

Sprint 38



Torque Curve

Sprint/Quattro 40



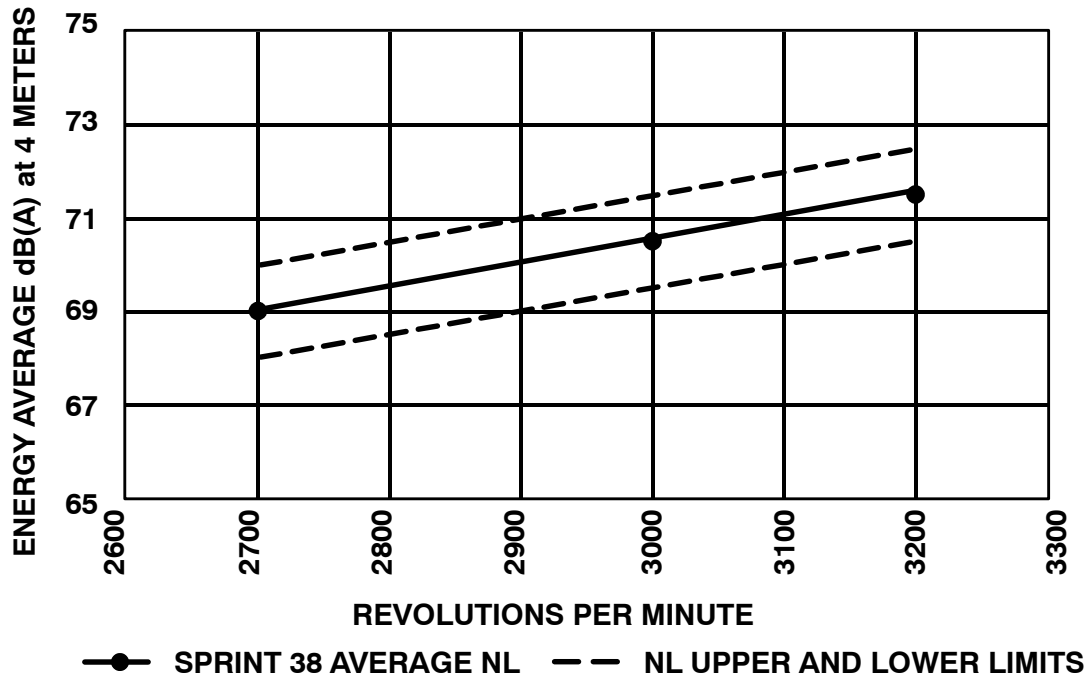


*Sprint*™ 375/40/ *Quattro* 40

SPRINT 375 98900  
SPRINT 40 10D900  
QUATTRO 40 10A900

Sound Performance

Sound Chart



Sound Chart

