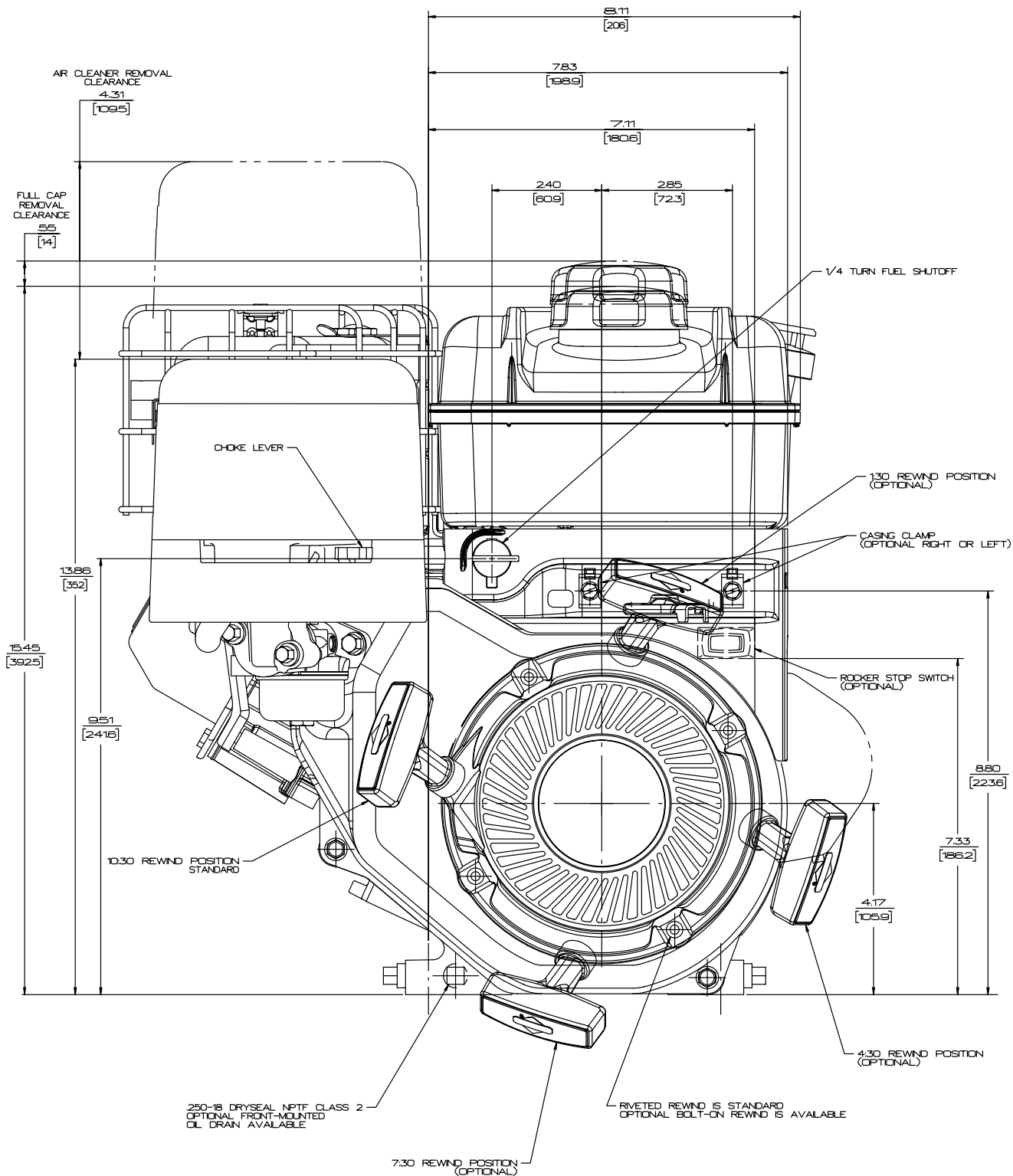




# Briggs & Stratton OHV 206

6.5 HP 123400

## Outline Drawings



Front View

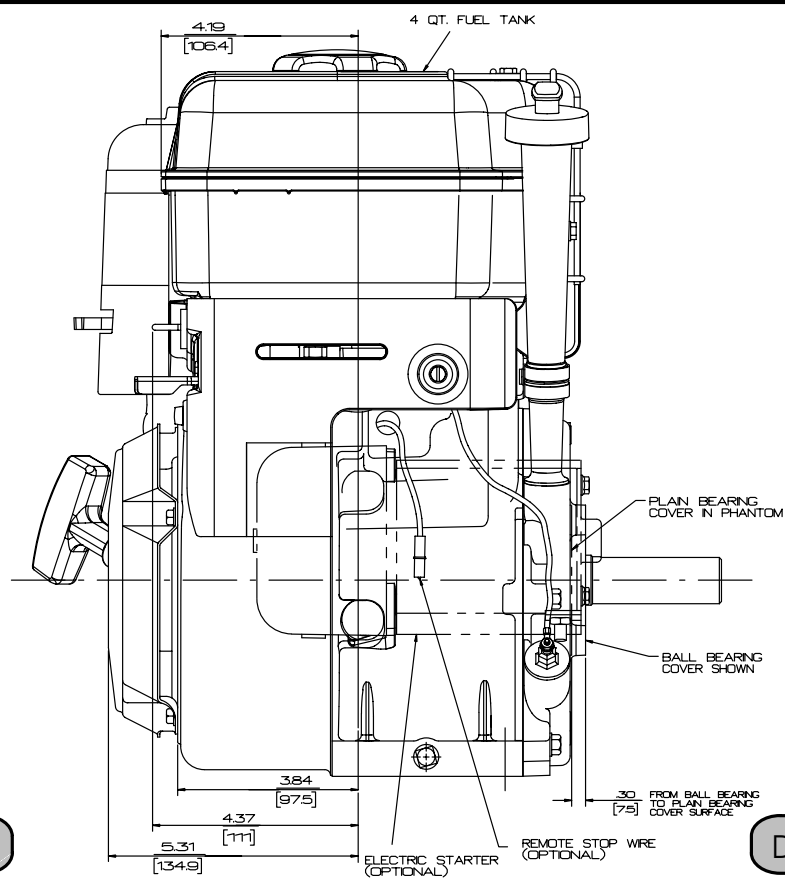
Dwg 123400000016



# Briggs & Stratton OHV 206

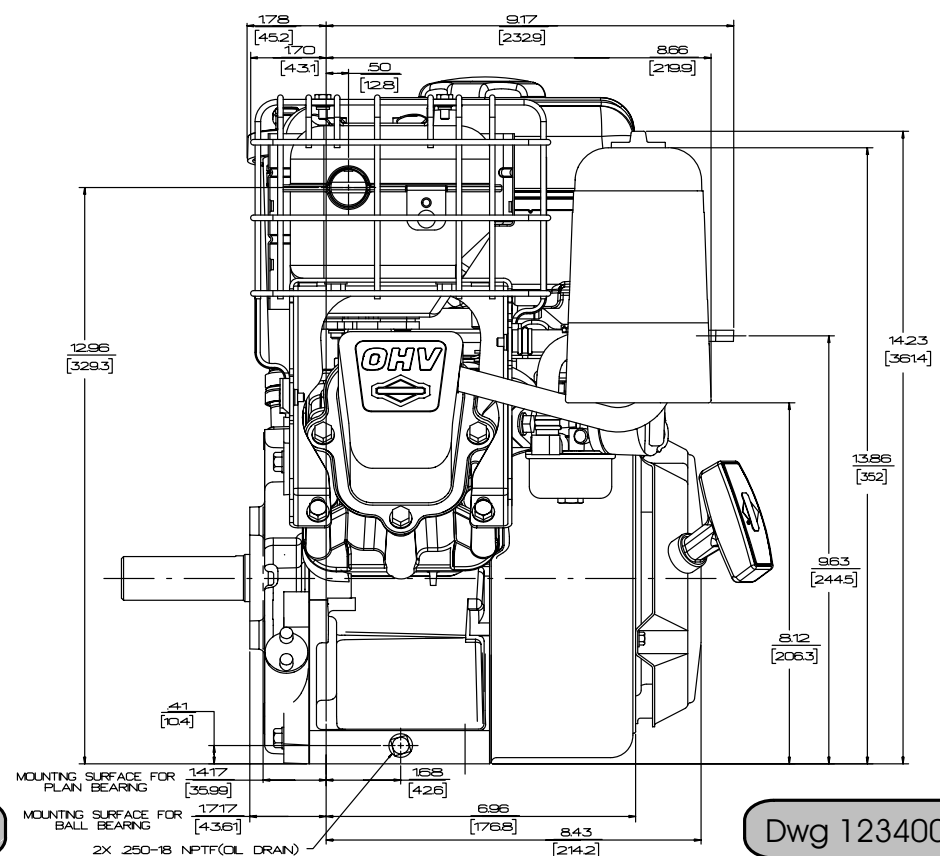
## 6.5 HP 123400

### Outline Drawings



Fuel Tank Side

Dwg 123400000016



Muffler Side

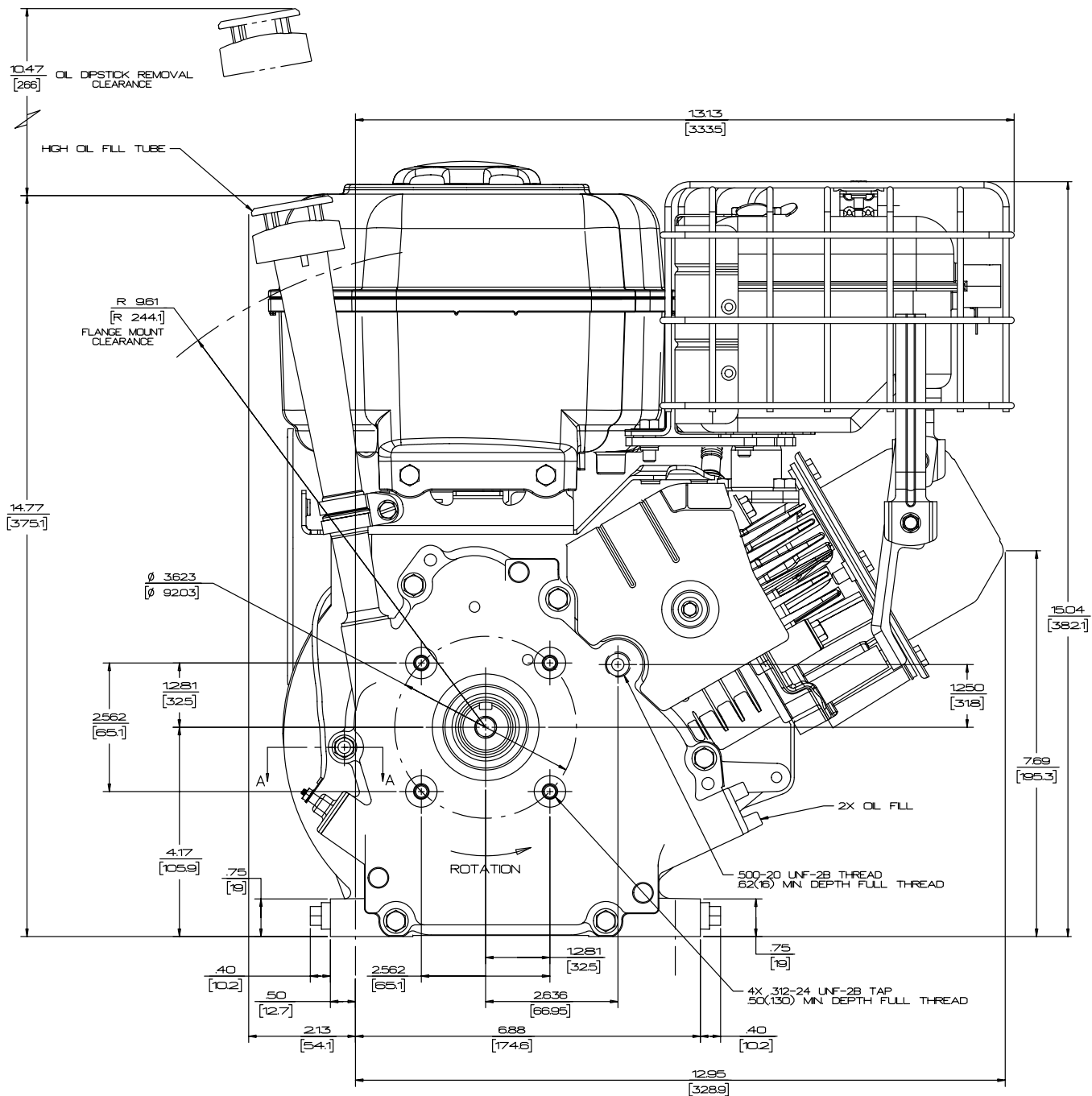
Dwg 123400000016



# Briggs & Stratton OHV 206

6.5 HP 123400

## Outline Drawing



PTO Side

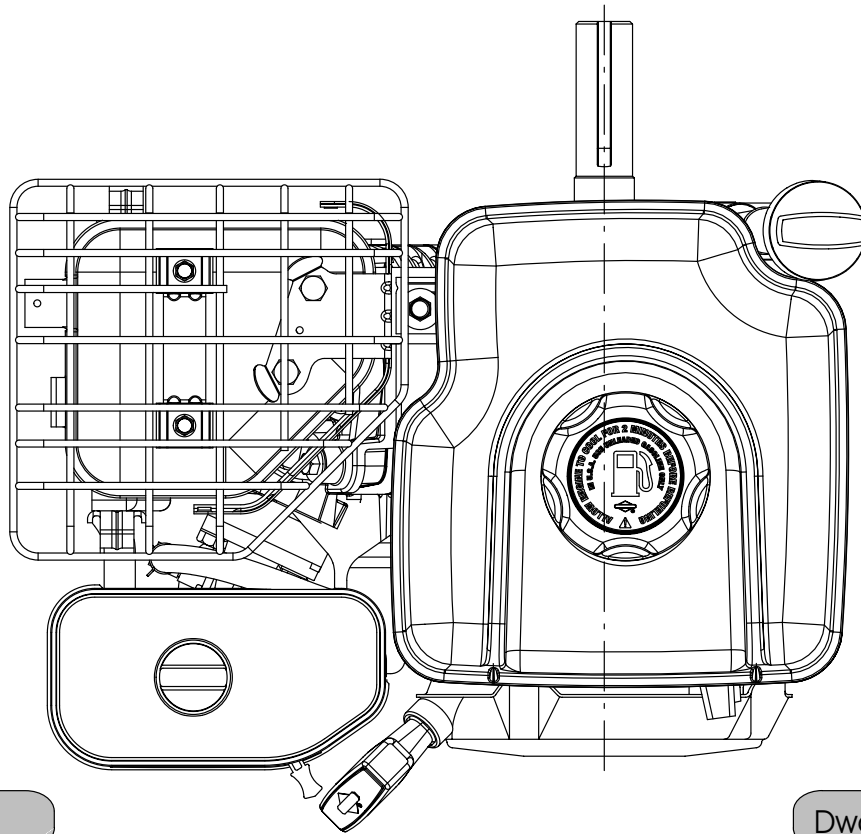
Dwg 123400000016



# Briggs & Stratton OHV 206

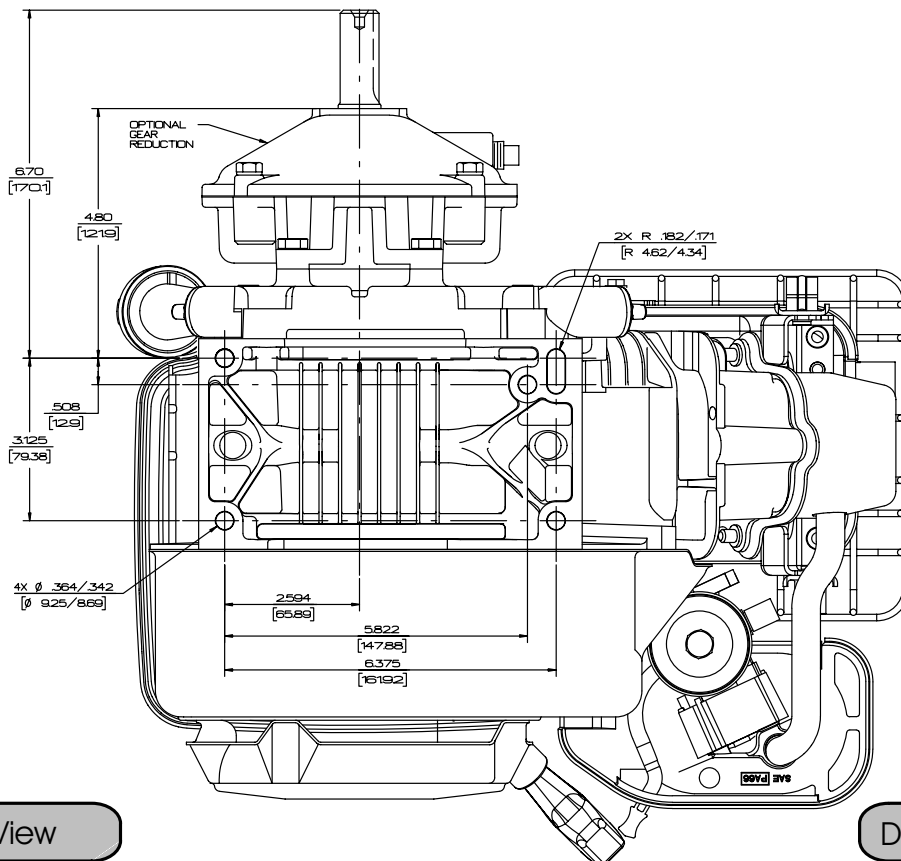
6.5 HP 123400

## Outline Drawings



Top View

Dwg 123400000016



Bottom View

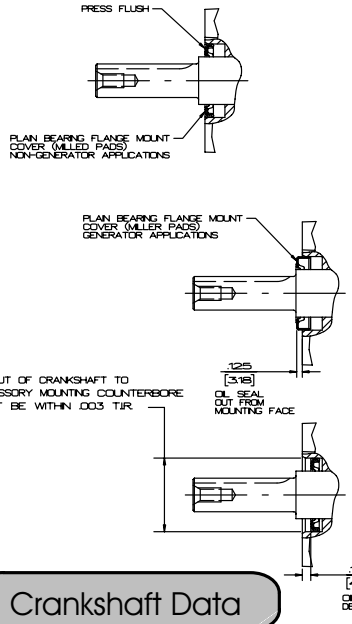
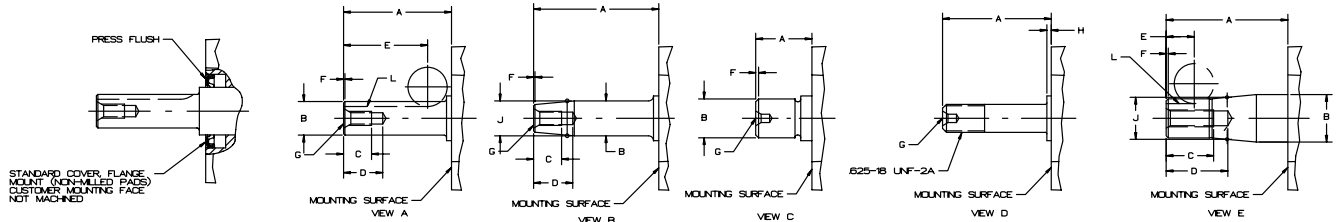
Dwg 123400000016



# Briggs & Stratton OHV 206

6.5 HP 123400

## Crankshaft Data/Controls

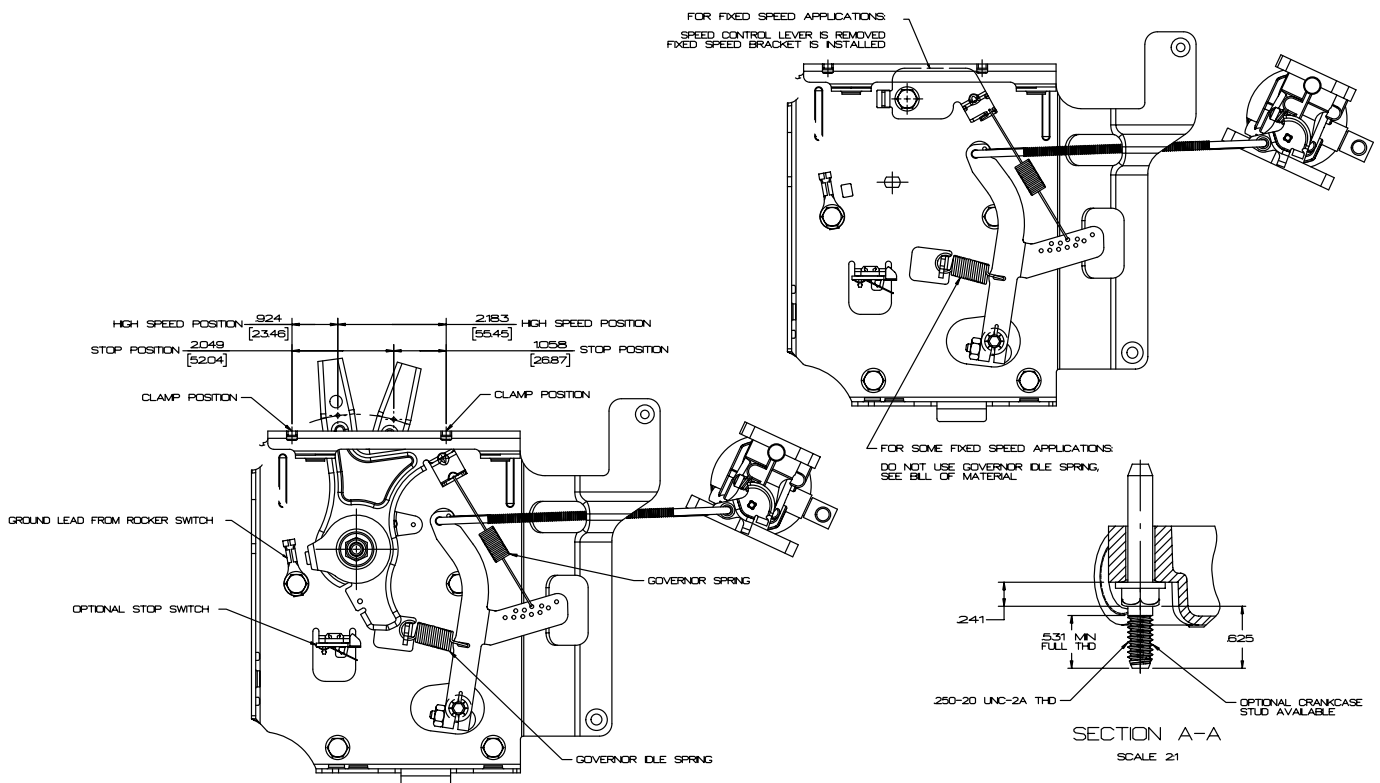


CRANKSHAFT PART NO	A ②	B	C	D	E	F	G	H	J	K	L SQUARE KEY SIZE (W X H)	SEE VIEW
<b>BALL BEARING</b>												
498211	24260 <sup>+0.318</sup> <sub>-0.250</sub> [6162]	Ø 5245 +0.005 [1586]		9375 ±0.625 [2381]			#5 CENTER DRILL	0.1420 <sup>+0.318</sup> <sub>-0.250</sub> [3.61]				D
498212	28190 <sup>+0.318</sup> <sub>-0.250</sub> [7160]	Ø 7807 ±0.005 [198.3]	525 MIN. [15.88]	575 MAX. [22.23]		45° X 0.31 ±0.010 [7.9]	312-24 UNF-2B [7.92]	0.1420 <sup>+0.318</sup> <sub>-0.250</sub> [3.61]	Ø 750 GAGE [19.05]	20640 <sup>+0.219</sup> <sub>-0.230</sub> [524.3]		B
498213	24340 <sup>+0.318</sup> <sub>-0.250</sub> [6182]	Ø 7495 ±0.005 [190.4]	525 MIN. [15.88]	575 MAX. [22.23]	1975 ±0.20 [4783]	45° X 0.31 ±0.010 [7.9]	312-24 UNF-2B [7.92]	0.1420 <sup>+0.318</sup> <sub>-0.250</sub> [3.61]			3/8 X 3/8	A
<b>FLAN BEARING</b>												
498214	12810 <sup>+0.325</sup> <sub>-0.250</sub> [3254]	Ø 567 ±0.03 [22.02]				45° X 0.33 ±0.010 [19.0]	#5 CENTER DRILL					C
498789	28190 <sup>+0.318</sup> <sub>-0.250</sub> [7160]	Ø 7807 ±0.005 [198.3]	525 MIN. [15.88]	575 MAX. [22.23]		45° X 0.31 ±0.010 [7.9]	312-24 UNF-2B [7.92]	0.1420 <sup>+0.318</sup> <sub>-0.250</sub> [3.61]	Ø 750 GAGE [19.05]	20640 <sup>+0.219</sup> <sub>-0.230</sub> [524.3]		B
498790	24340 <sup>+0.318</sup> <sub>-0.250</sub> [6182]	Ø 7495 ±0.005 [190.4]	525 MIN. [15.88]	575 MAX. [22.23]	1975 ±0.20 [4783]	45° X 0.31 ±0.010 [7.9]	312-24 UNF-2B [7.92]	0.1420 <sup>+0.318</sup> <sub>-0.250</sub> [3.61]			3/8 X 3/8	A
498791	14570 <sup>+0.325</sup> <sub>-0.250</sub> [3700]	Ø 7495 ±0.005 [190.4]	575 MIN. [14.63]	1125 MAX. [28.58]	875 ±0.20 [22.23]	45° X 0.31 ±0.010 [7.9]	375-24 UNF-2B [9.53]	0.1420 <sup>+0.318</sup> <sub>-0.250</sub> [3.61]			3/8 X 3/8	A
498792	28860 <sup>+0.325</sup> <sub>-0.250</sub> [7330]	Ø 8965 ±0.005 [25.39]	938 MIN. [23.83]	1375 MAX. [34.93]	2250 ±0.20 [57.15]	45° X 0.47 ±0.016 [11.9]	375-24 UNF-2B [9.53]	0.1420 <sup>+0.318</sup> <sub>-0.250</sub> [3.61]			1/4 X 1/4	A
* 498793	27170 <sup>+0.325</sup> <sub>-0.250</sub> [7704]	Ø 10621 ±0.004 [269.9]	1050 MIN. [26.92]	1375 MAX. [34.93]	525 ±0.20 [15.88]	45° X 0.47 ±0.016 [11.9]	375-24 UNF-2B [9.53]		Ø 9375 GAGE [23.8]	13610 <sup>+0.225</sup> <sub>-0.230</sub> [344.4]	3/8 X 3/8	E

- ① PER ANSI B171-1967, R 1973 (SEE MACHINERY'S HANDBOOK, INDUSTRIAL PRESS)
- ② TOLERANCE INCLUDES TAKING END PLAY INTO ACCOUNT
- \* ③ INTERNAL ENGINE ENDPLAY TO BE BETWEEN .009 - .0089 ON SPECIAL ENGINE APPLICATION

Crankshaft Data

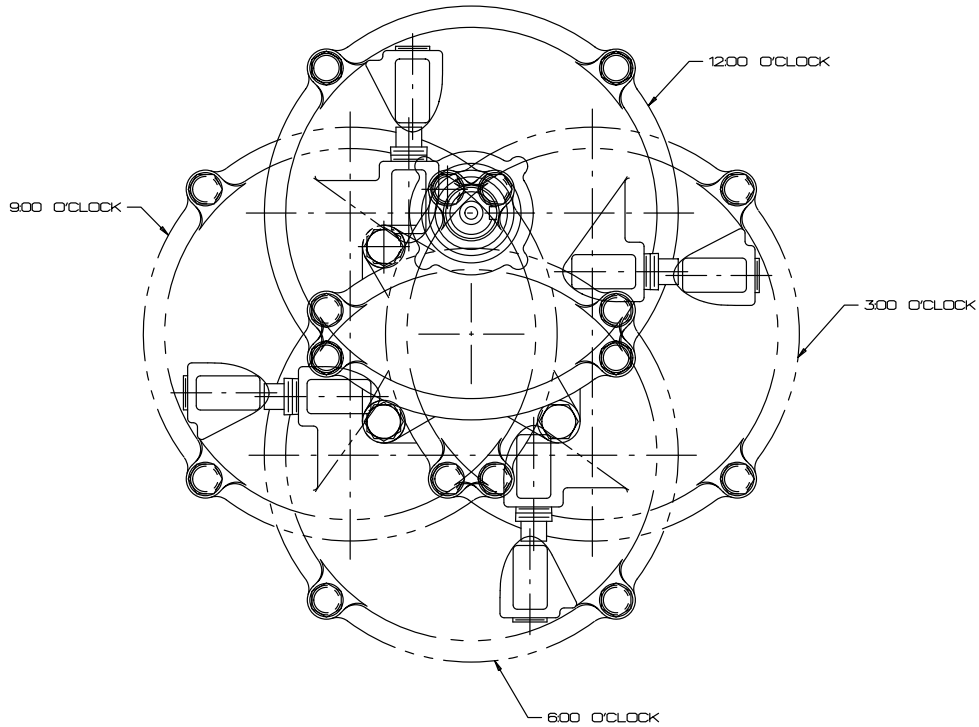
Dwg 123400000016



Controls

Dwg 123400000016

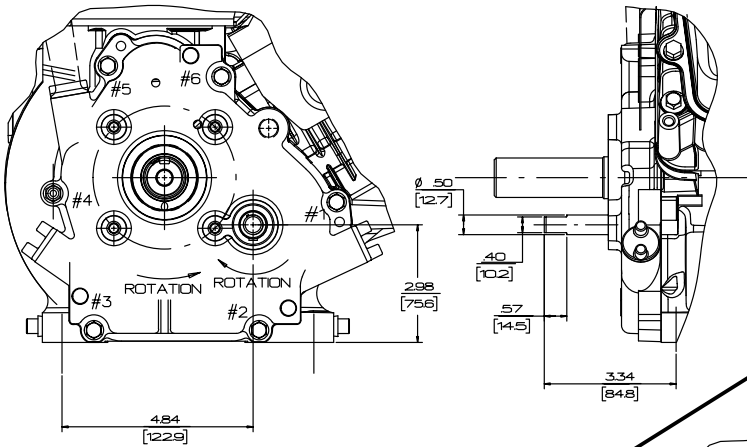
Crankshaft Data/Controls



GEAR CASE POSITIONS

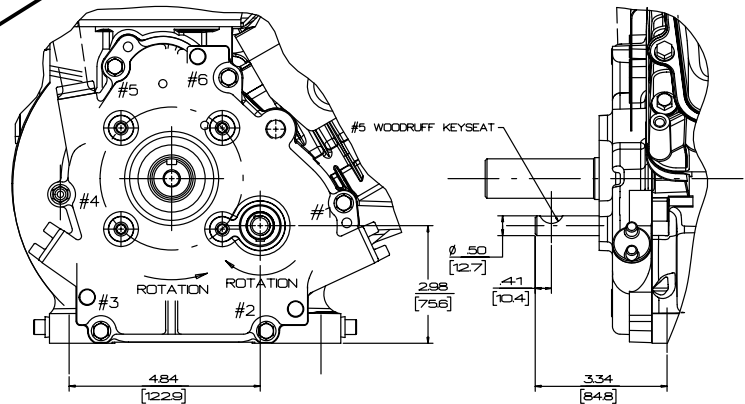
Gear Case Positions

Dwg 123400000016



2:1 Camshaft (Parallel Flats)

2:1 Camshaft (Woodruff Keyseat)



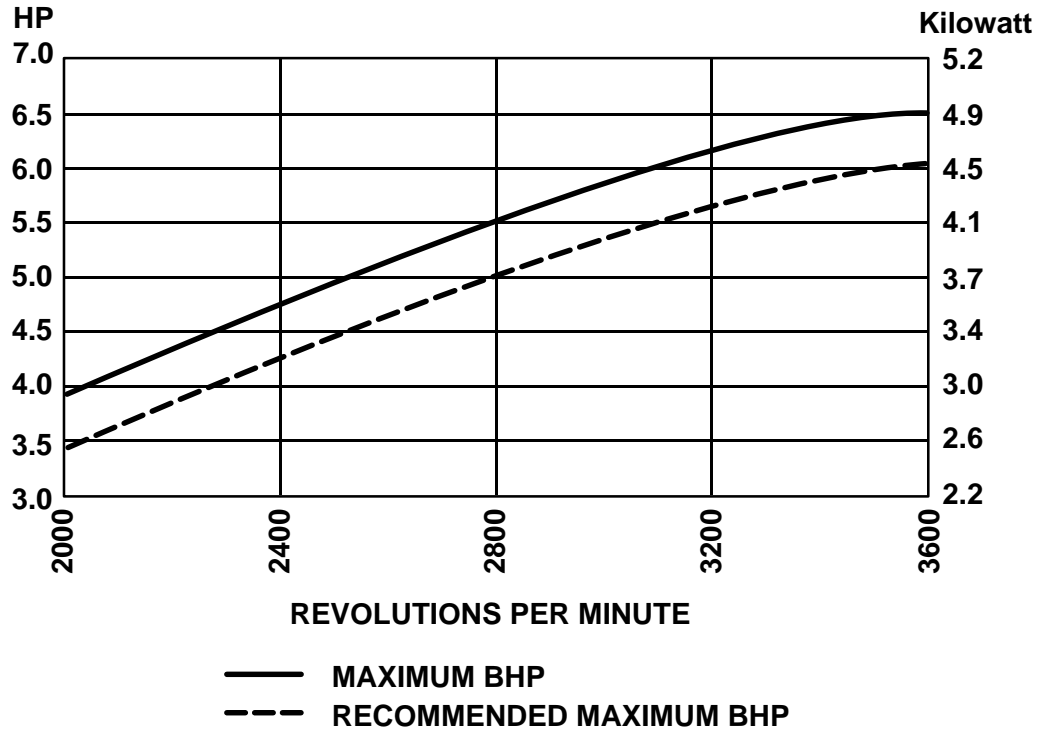


# Briggs & Stratton OHV 206

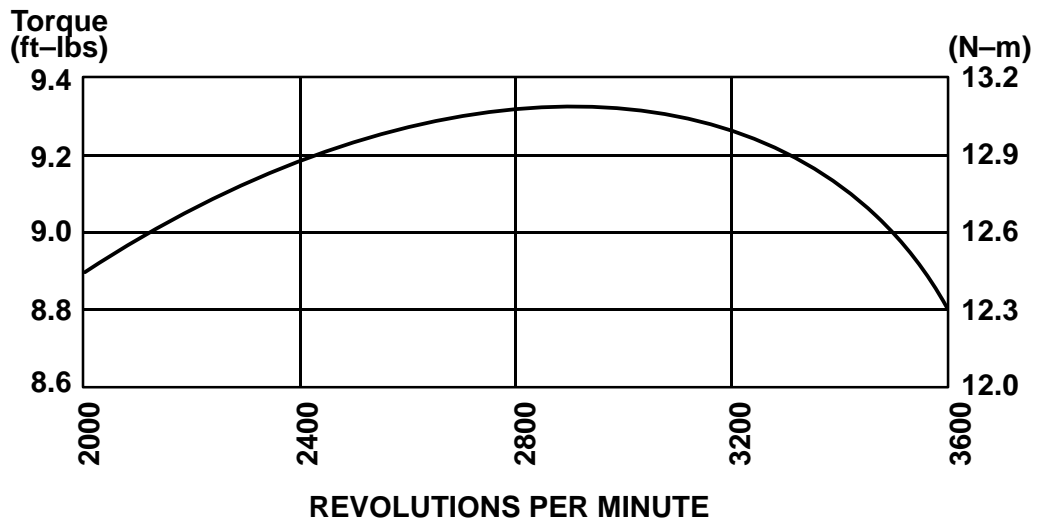
6.5 HP 123400

## Performance Data

### Power Curve



### Torque Curve





Briggs & Stratton OHV 206

6.5 HP 123400

Sound Performance

Sound Chart

Sound Chart