

Click here to return to
BRIGGS & STRATTON

MODEL-TYPE-CODE & SERIAL NUMBER LOCATIONS



(CLICK ON YOUR ENGINE TYPE)

SMALL LAWN MOWER ENGINES



RIDE ON LAWN MOWER ENGINES



SMALL UTILITY ENGINES



LARGE COMMERCIAL UTILITY ENGINES



BRIGGS & STRATTON
CORPORATION

[For historic engines click here.](#)

YOU. POWERED.



Click here to return to
BRIGGS & STRATTON



SMALL LAWN MOWER ENGINES (CLICK ON YOUR ENGINE BELOW)



**450E
(OHV)**



**450-550
(L-HEAD)**



**500E-575EX
(OHV)**



**600E – 675EX
(L-HEAD)**



**600EX-675EXi
(OHV)**



**750EX – 775EX
(DOV)**



**INTEK &
INTEK PRO**



**825EX – 875 EXi
(OHV)**



**850EX – 875EX
(OHV pre Oct. 2017)**



BRIGGS & STRATTON
CORPORATION

[For historic engines click here.](#)

YOU.POWERED.



Click here to return to
BRIGGS & STRATTON



RIDE ON LAWN MOWER ENGINES (CLICK ON YOUR ENGINE BELOW)



BRIGGS & STRATTON
CORPORATION

[For historic engines click here.](#)

YOU.POWERED.



Click here to return to
BRIGGS & STRATTON



SMALL UTILITY ENGINES (CLICK ON YOUR ENGINE BELOW)



RS, CR AND XR / SERIES ENGINES



**INTEK, INTEK-PRO
& POWERBUILT**



**VANGUARD 6.5HP,
8HP & 10HP PRE-2018**



**VANGUARD 6.5HP
AFTER 2018**



VANGUARD 13HP



BRIGGS & STRATTON
CORPORATION

[For historic engines click here.](#)

YOU.POWERED.



Click here to return to
BRIGGS & STRATTON

LARGE COMMERCIAL UTILITY ENGINES (CLICK ON YOUR ENGINE BELOW)



**VANGUARD V-TWIN
SMALL BLOCK 14-23HP**



**VANGUARD V-TWIN
SMALL BLOCK 14-23HP**



**VANGUARD V-TWIN
BIG BLOCK 27-40HP**



**VANGUARD V-TWIN
BIG BLOCK 27-40HP**



BRIGGS & STRATTON
CORPORATION

[For historic engines click here.](#)

YOU. POWERED.



Click here to return to
BRIGGS & STRATTON

450E - OHV



BRIGGS & STRATTON
CORPORATION

YOU.POWERED.



Click here to return to
BRIGGS & STRATTON

450 – 550 (L-HEAD)



BRIGGS & STRATTON
CORPORATION

YOU.POWERED.



Click here to return to
BRIGGS & STRATTON

550 – 575 EX (OHV)



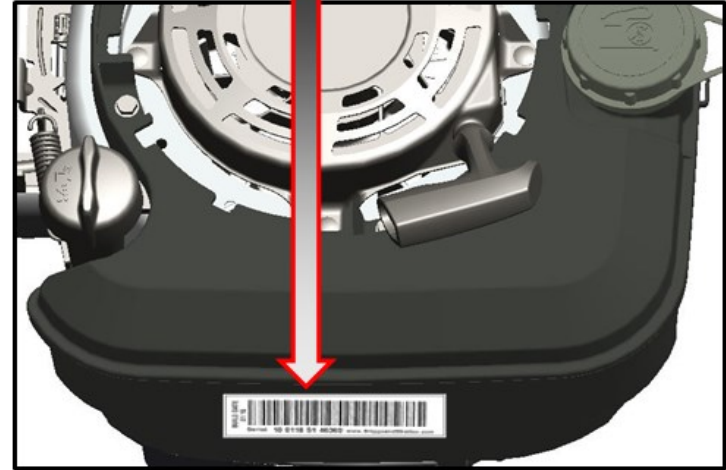
BRIGGS & STRATTON
CORPORATION

YOU. POWERED.



Click here to return to
BRIGGS & STRATTON

600-675EX (L-HEAD QUANTUM)



BRIGGS & STRATTON
CORPORATION

YOU.POWERED.



Click here to return to
BRIGGS & STRATTON

675EXI (OHV)



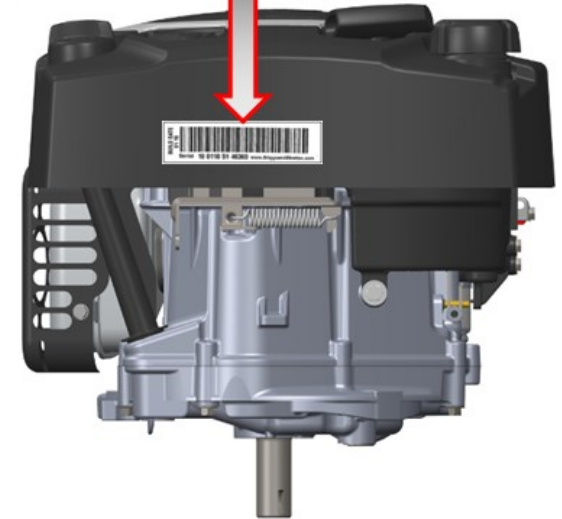
BRIGGS & STRATTON
CORPORATION

YOU. POWERED.



Click here to return to
BRIGGS & STRATTON

750 – 775EX (DOV)



BRIGGS & STRATTON
CORPORATION

YOU.POWERED.



Click here to return to
BRIGGS & STRATTON

850 INTEK



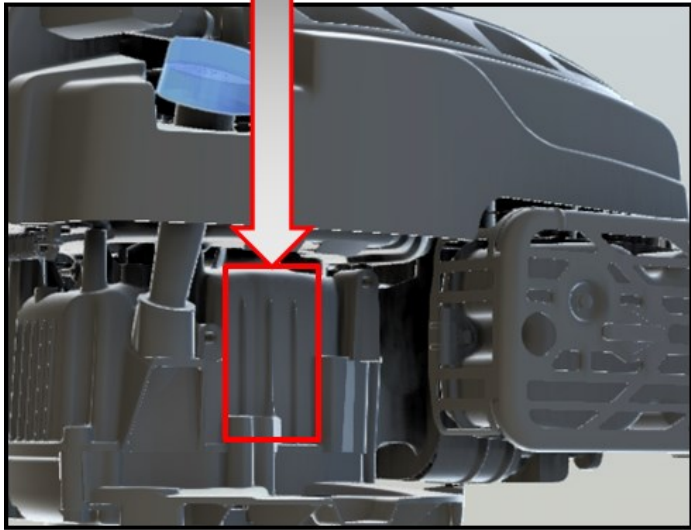
BRIGGS & STRATTON
CORPORATION

YOU.POWERED.



Click here to return to
BRIGGS & STRATTON

850 – 875EX (NEW, AFTER OCT 17)



BRIGGS & STRATTON
CORPORATION

YOU.POWERED.



Click here to return to
BRIGGS & STRATTON

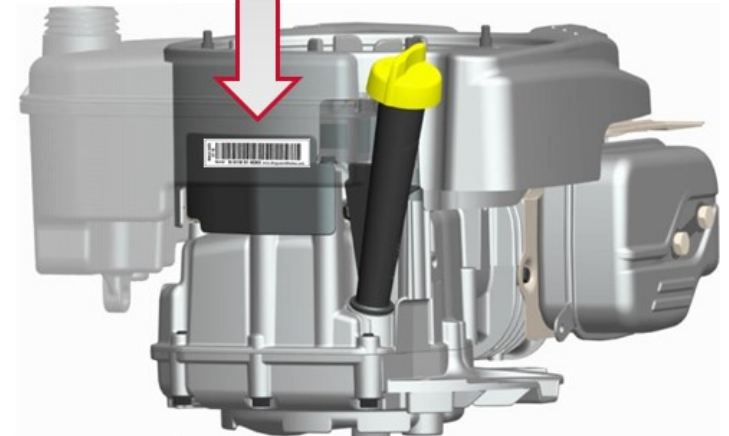
850-875ex (OHV PRE OCT 2017)



BUILD DATE
01 10



Serial 10 0118 51 46360 www.BriggsandStratton.com



BRIGGS & STRATTON
CORPORATION

YOU.POWERED.



Click here to return to
BRIGGS & STRATTON

SINGLE CYLINDER LARGE VERTICAL ENGINE (OHV)



BRIGGS & STRATTON
CORPORATION

YOU.POWERED.



Click here to return to
BRIGGS & STRATTON



V-TWIN CYLINDER OHV 7 & 8 SERIES, INTEK™, PROFFESIONAL SERIES™ & COMMERCIAL SERIES™



BRIGGS & STRATTON
CORPORATION

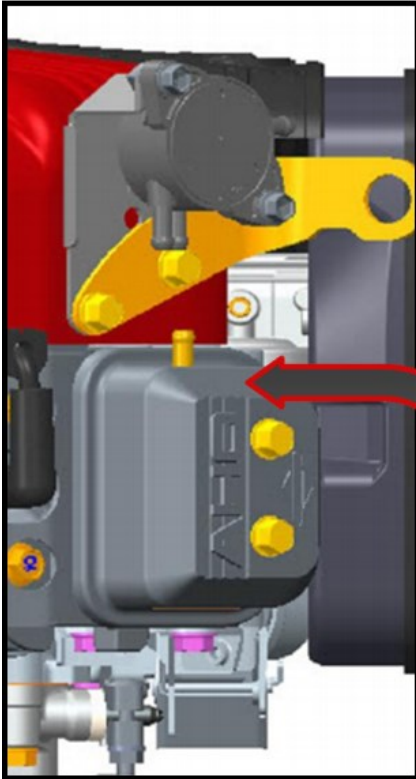
YOU.POWERED.



Click here to return to
BRIGGS & STRATTON



VANGUARD V-TWIN VERTICAL SHAFT OHV 16 – 23 HP



BRIGGS & STRATTON
CORPORATION

YOU.POWERED.



Click here to return to
BRIGGS & STRATTON



VANGUARD V-TWIN 810cc VERTICAL SHAFT OHV



BRIGGS & STRATTON
CORPORATION

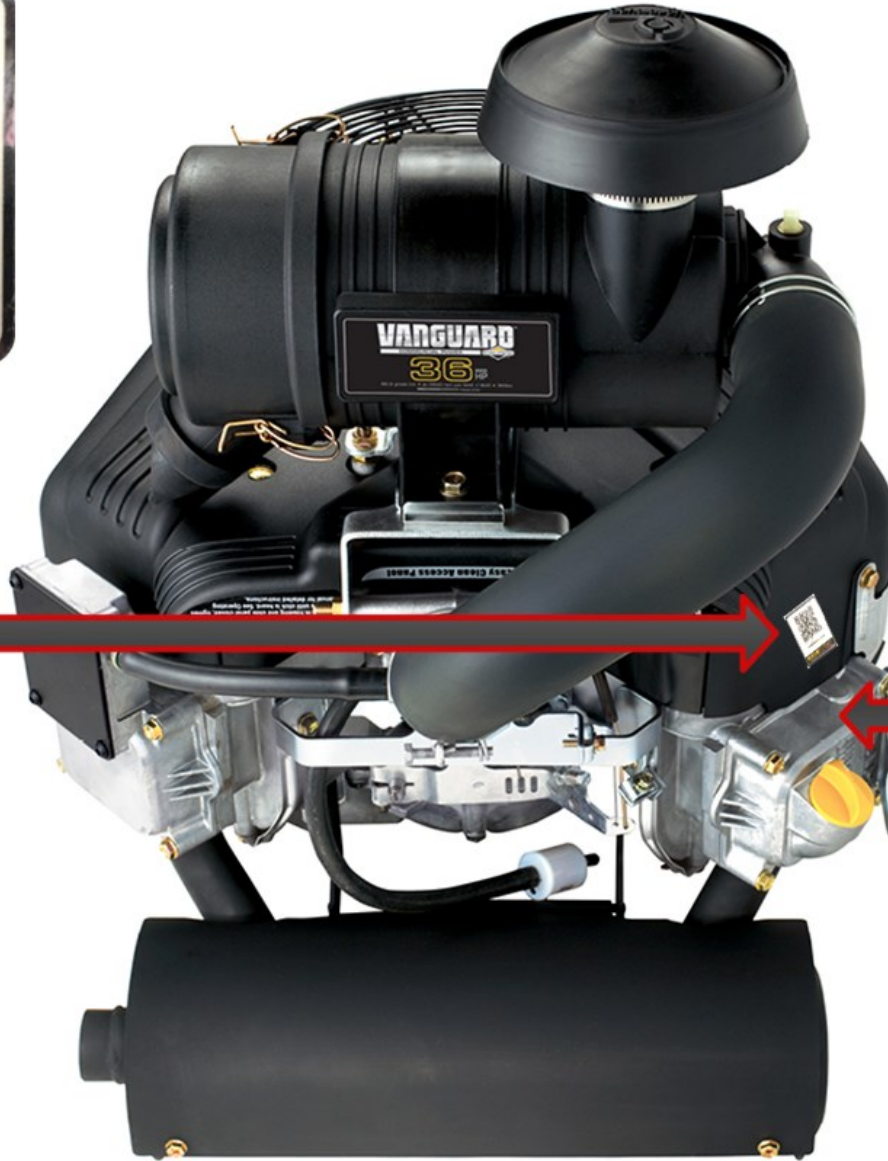
YOU. POWERED.



Click here to return to
BRIGGS & STRATTON



VANGUARD V-TWIN BIG BLOCK 28-40HP



BRIGGS & STRATTON
CORPORATION

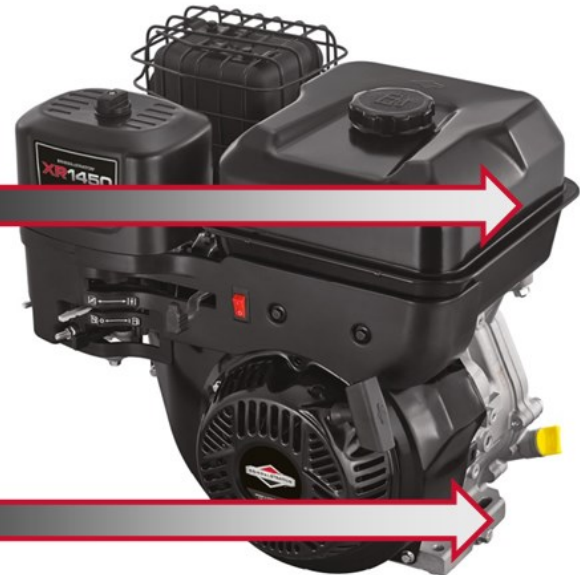
YOU.POWERED.



Click here to return to
BRIGGS & STRATTON



CR 750 & 950, XR550, XR750 XR 950 XR1450 XR2100 & SERIES ENGINES



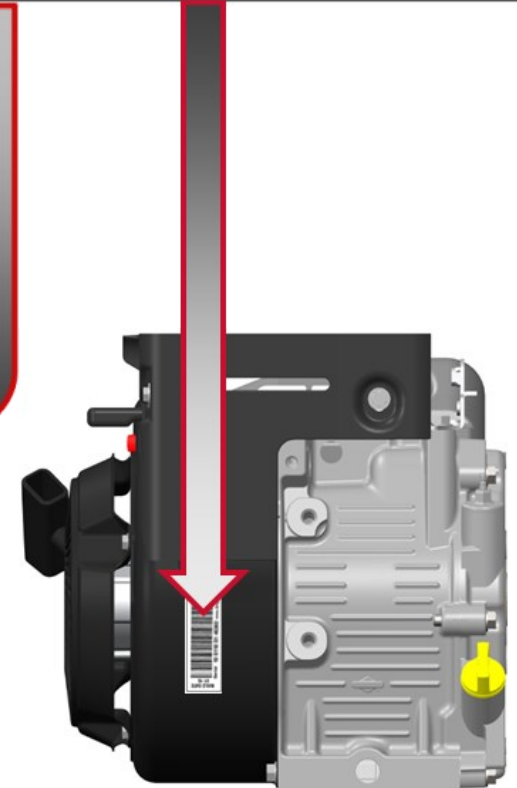
BRIGGS & STRATTON
CORPORATION

YOU.POWERED.



Click here to return to
BRIGGS & STRATTON

INTEK, INTEK PRO, I/C OHV & POWERBUILT



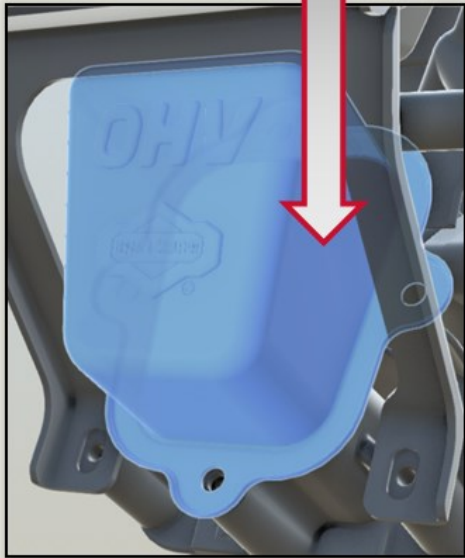
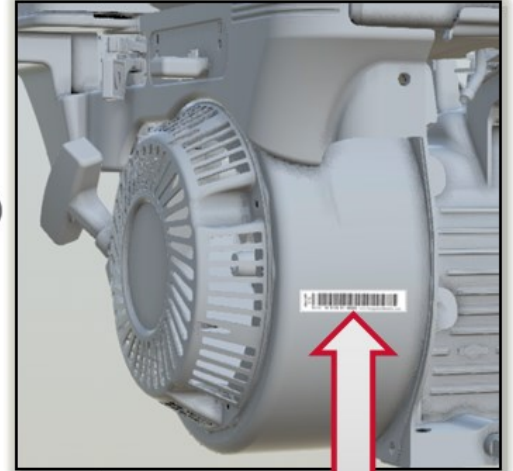
BRIGGS & STRATTON
CORPORATION

YOU.POWERED.



Click here to return to
BRIGGS & STRATTON

6.5HP, 8 HP & 10HP OHV VANGUARD ENGINES



BRIGGS & STRATTON
CORPORATION

YOU.POWERED.



Click here to return to
BRIGGS & STRATTON

VANGUARD 6.5HP



BRIGGS & STRATTON
CORPORATION

YOU.POWERED.



Click here to return to
BRIGGS & STRATTON

VANGUARD 13HP



BRIGGS & STRATTON
CORPORATION

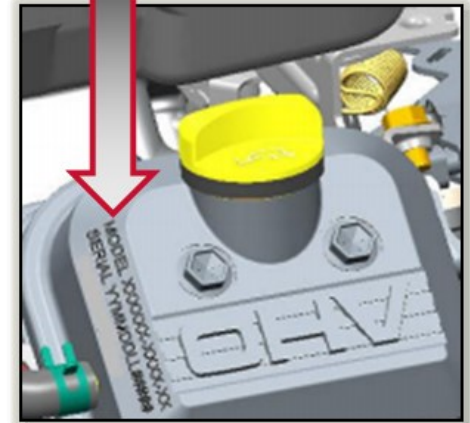
YOU.POWERED.



Click here to return to
BRIGGS & STRATTON



VANGUARD V-TWIN HORIZONTAL SHAFT SMALL BLOCK 14 - 23 HP



BRIGGS & STRATTON
CORPORATION

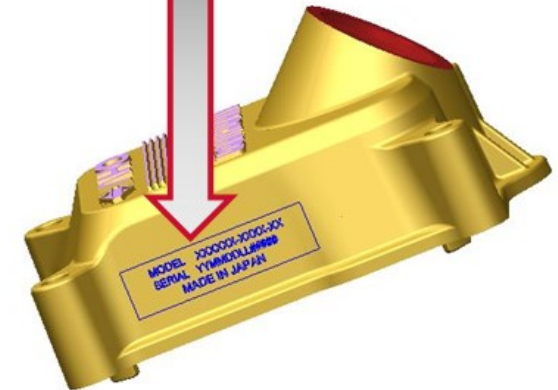
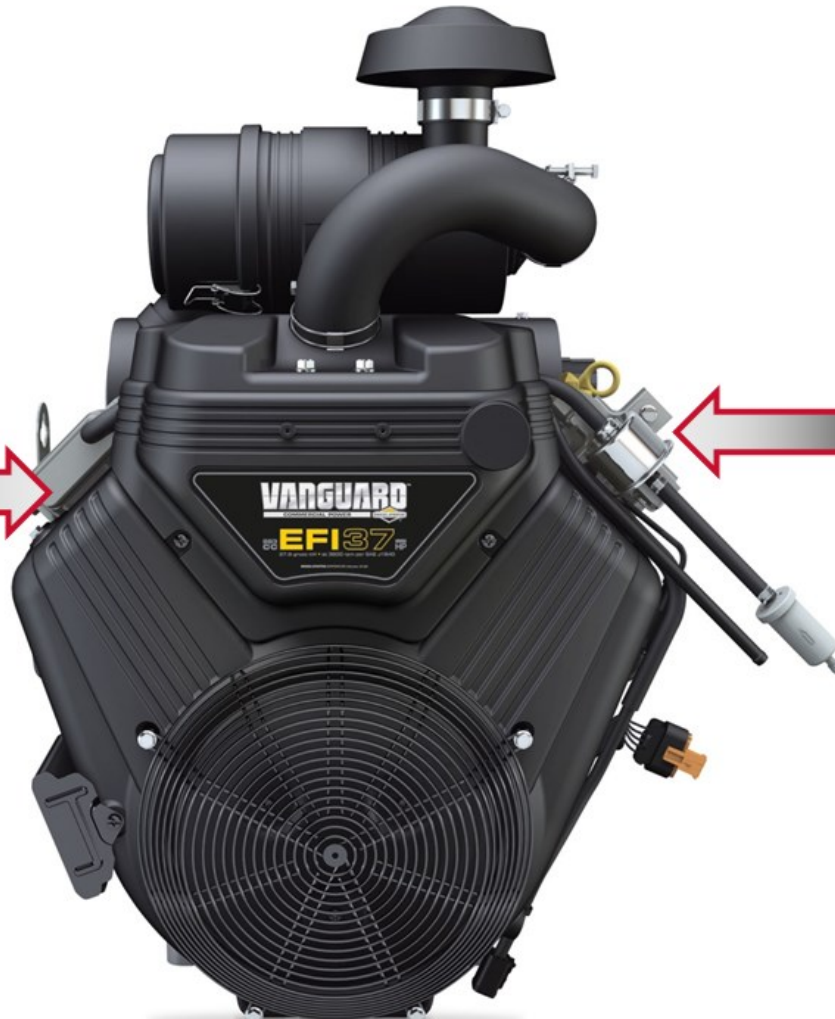
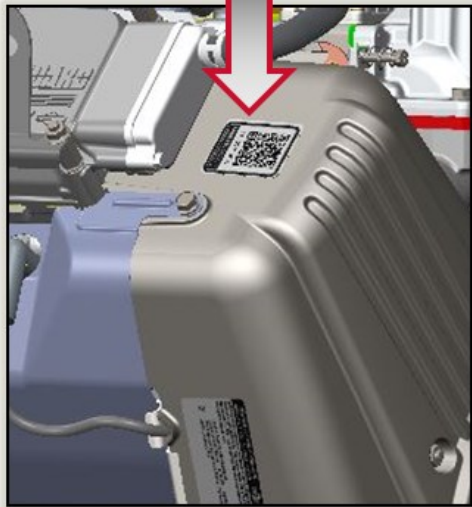
YOU.POWERED.



Click here to return to
BRIGGS & STRATTON



VANGUARD V-TWIN HORIZONTAL SHAFT BIG BLOCK 31 - 40 HP



BRIGGS & STRATTON
CORPORATION

YOU.POWERED.

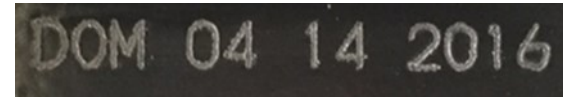
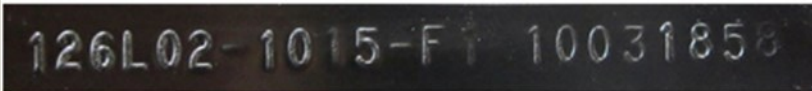


Help – What are these number for?



Model – Type – Code

Model-type-code is a number that is stamped into every Briggs & Stratton engine. This set of numbers is required to identify spare parts and gather technical information for repair purposes..Eg; Valve Clearances and torque settings. The model-type number outlines engine features and the code provides a date the engine was built.



Model	Type	Code
126L02	1015 - F1	10031856 YYMMDDXX

Some engines do not feature a “code” to show the production date. Instead they display DOM mm dd yyyy as above.



Serial Number

All engines now feature a serial number that is required to process warranty claims after repair. The serial number can be found on a barcode decal.



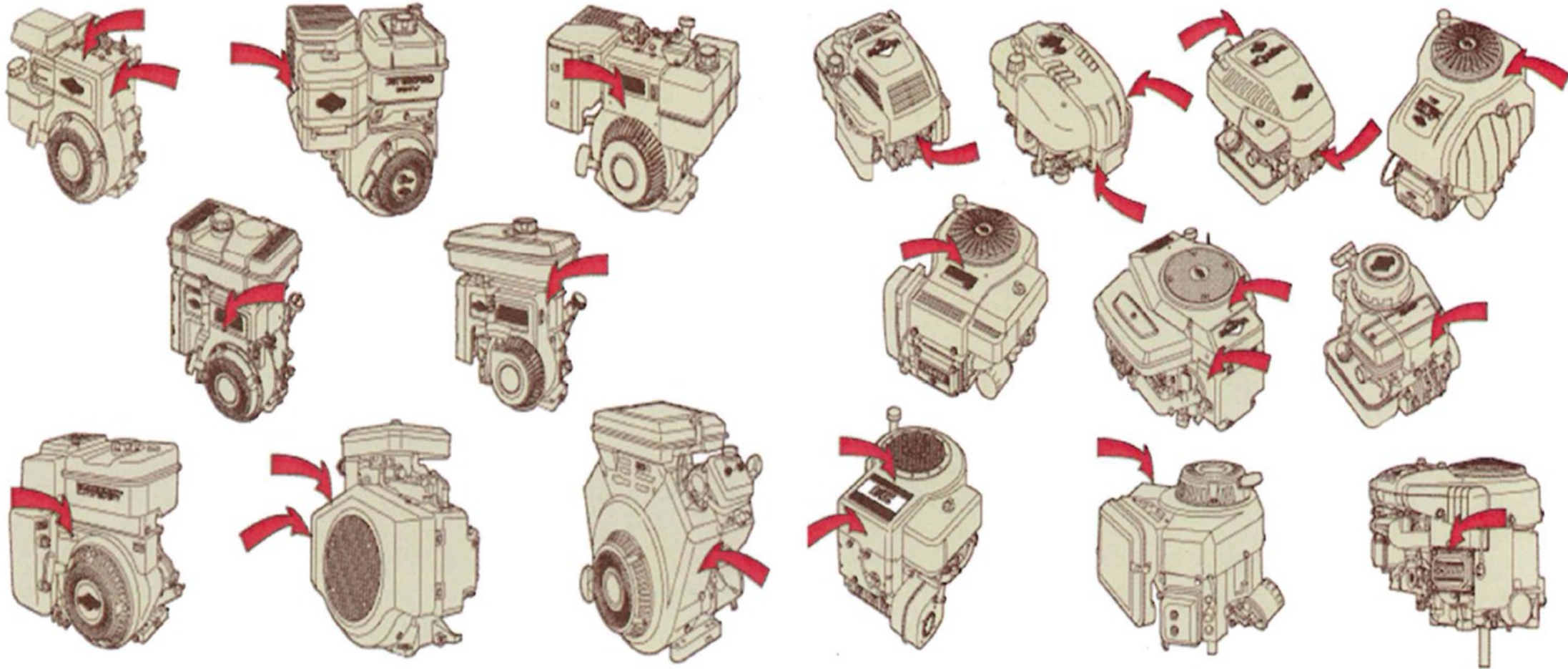
Power Code

Vanguard engines now feature a QR code/ serial number that can be scanned with a smartphone. This number is also required for processing warranty claims after repair. The QR code can be scanned to present engine parts lists, features and operators manuals on www.vanguardengines.com.



Click here to return to
BRIGGS & STRATTON

Historic Engines



BRIGGS & STRATTON
CORPORATION

YOU. POWERED.